



**S-Trader**





# WWS | Welles Wilder Smoothing

## Contents

Description .....	3
Formula .....	3
Parameters .....	3
Output value(s) .....	3
Plot .....	3
Quant Script™ Syntax .....	4
Dialogs .....	4
Chart Study Dialog .....	4
Sample Chart With Study .....	5
Quant Script™ Wizard Study Dialog .....	6
Quant Script™ Study Dialog .....	7



## Description

Welles Wilder's Smoothing indicator was developed by Welles Wilder and mentioned in his book "New Concepts in Technical Trading". Wilder used the Smoothing indicator as a component in several of his other indicators including the RSI. Wilder's Smoothing indicator can be used in the same capacity as other moving averages. The smoothing indicator is used as an input in Wilder's other indicators such as the RSI, Wilder's Swing Indicator and Wilder's Volatility Indicator.

## Formula

Step 1: For the first  $n$  periods, you can set the  $WWS_n = SMA_n = (Value_1 + Value_2 + \dots + Value_n) / n$  (or you can set  $WWS_n = 0$ )

Step 2: Subsequently,  $WWS_p = WWS_{p-1} + (Value_{today} - WWS_{p-1}) / n$

## Parameters

<b>Source</b>	Any price source (O, H, L, C, Vol, OI) or any other built-in or custom study
<b>Periods</b>	Any number of periods

## Output value(s)

There is a single output value resulting from the formula, the Welles Wilder Smoothing.

## Plot

The plot is an overlay inside the price series panel.

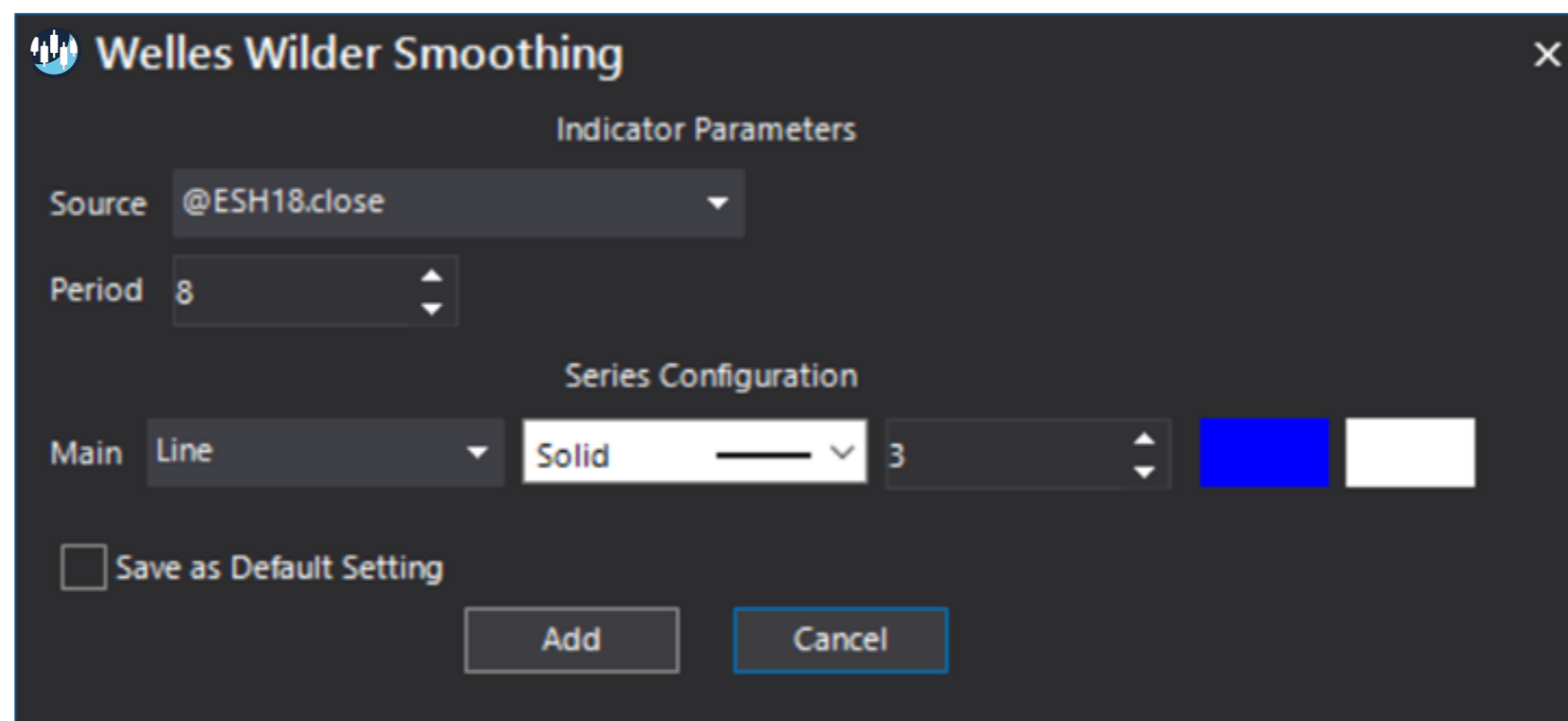


## Quant Script™ Syntax

<b>Short Form</b>	<i>WWS</i> (Source, Periods)
<b>Long Form</b>	<i>WellesWilderSmoothing</i> (Source, Periods)

## Dialogs

### Chart Study Dialog



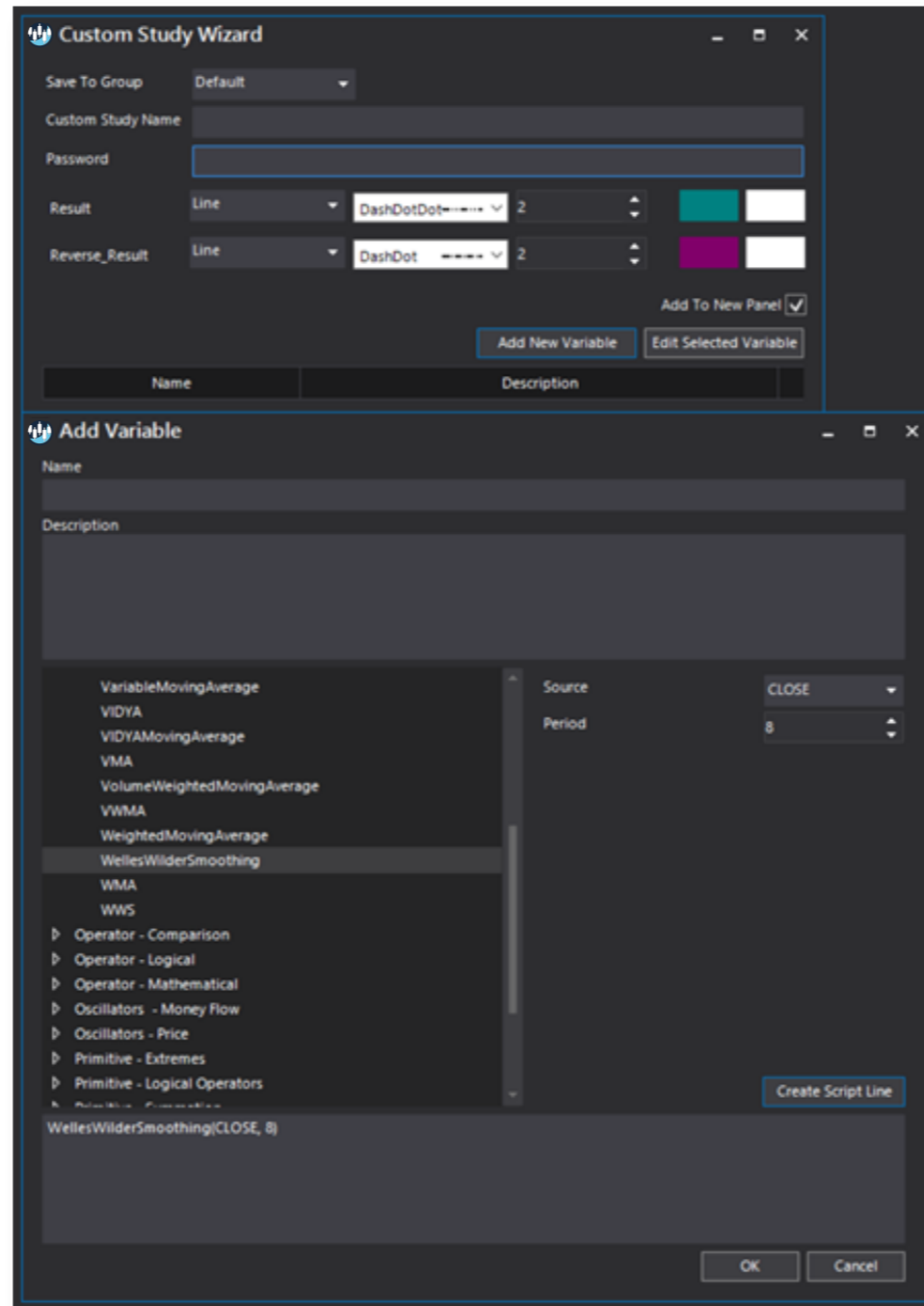


## Sample Chart With Study





## Quant Script™ Wizard Study Dialog





## Quant Script™ Study Dialog

**Custom Study Editor** [Close]

Save To Group: 1\_MOVING\_AVERAGES [Dropdown] A 8.25 [Input]

Custom Study Name: WWS [Text]

Password: [Text]

Result: Line [Dropdown] DashDotDot [Dropdown] 2 [Input] [Color Picker]

Reverse\_Result: Line [Dropdown] DashDot [Dropdown] 2 [Input] [Color Picker]

Formula [Add To New Panel

```
SET RESULT = WWS(CLOSE,8)
SET REVERSE_RESULT = WellesWilderSmoothing(CLOSE,8)
```

[OK] [Cancel]