



**S-Trader**





## CCI | Commodity Channel Index

### Contents

Description .....	3
Formula .....	3
Parameters .....	3
Output value(s) .....	4
Plot .....	4
Quant Script™ Syntax .....	4
Dialogs .....	4
Chart Study Dialog .....	4
Sample Chart With Study .....	5
Quant Script™ Wizard Study Dialog .....	6
Quant Script™ Study Dialog .....	7



## Description

Developed by Donald Lambert and featured in the Commodities magazine in 1980, the Commodity Channel Index (CCI) is a versatile indicator that can be used to identify a new trend or warn of extreme conditions. Lambert originally developed the CCI to identify cyclical turns in commodities, but the indicator can be successfully applied to indices, ETFs, stocks, and other securities. In general, CCI measures the current price level relative to an average price level over a given period of time. CCI is relatively high when prices are far above their average. CCI is relatively low when prices are far below their average. In this manner, CCI can be used to identify overbought and oversold levels.

## Formula

Step 1: Calculate TP = Typical Price = (High + Low + Close)/3

Step 2: Calculate MATP = Moving average of TP for the requested  $n$  periods and MA Type

Step 3: For each individual TP, calculate DEV = TP – MATP. Then calculate each individual ABSDEV = ABSOLUTE of DEV

Step 4: Calculate MABSDEV = MA(ABSDEV) = Moving average of ABSDEV for the requested  $n$  periods and MA Type (this ideally by existing formula)

Step 5: CCI = Commodity Channel Index =  $(TP - MATP) / (0.015 * MABSDEV)$

## Parameters

<b>Periods</b>	Any number of periods
<b>MA Type</b>	Any available moving average type



## Output value(s)

There is one output value resulting from the formula, the Commodity Channel Index.

## Plot

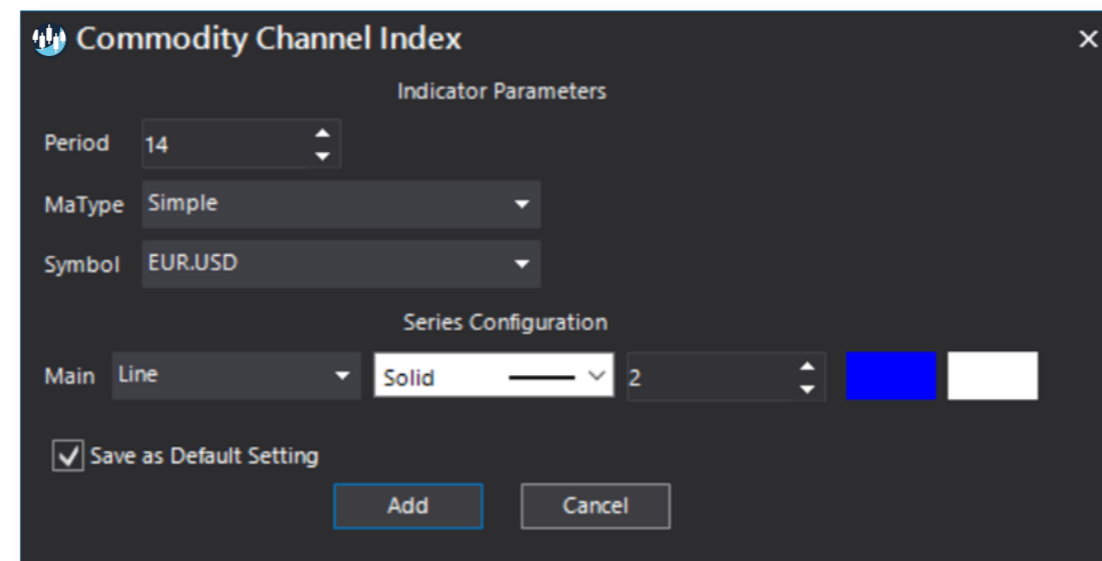
The plot is in a separate panel at the bottom.

## Quant Script™ Syntax

<b>Short Form</b>	<i>CCI</i> (Periods, MA Type)
<b>Long Form</b>	<i>CommodityChannelIndex</i> (Periods, MA Type)

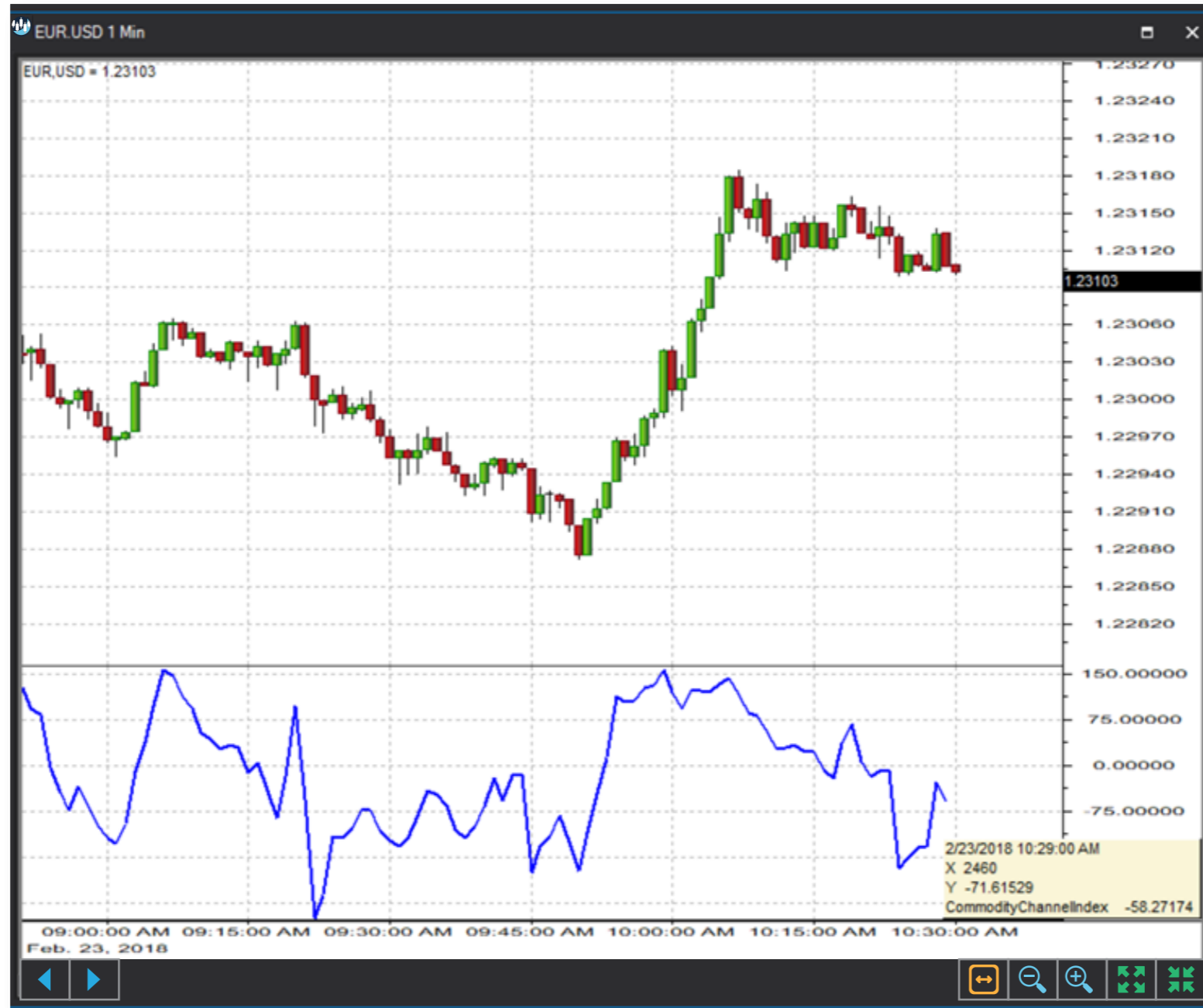
## Dialogs

### Chart Study Dialog





## Sample Chart With Study





## Quant Script™ Wizard Study Dialog

The image shows two overlapping dialog boxes from the S-Trader platform. The top dialog is titled "Custom Study Wizard" and contains the following fields and controls:

- Save To Group: Default (dropdown)
- Custom Study Name: [Empty text field]
- Password: [Empty text field]
- Result: Line (dropdown), DashDotDot (dropdown), 2 (spin box), [Color selection buttons]
- Reverse\_Result: Line (dropdown), DashDot (dropdown), 2 (spin box), [Color selection buttons]
- Add To New Panel:
- Buttons: Add New Variable, Edit Selected Variable
- Table with columns: Name, Description

The bottom dialog is titled "Add Variable" and contains the following fields and controls:

- Name: [Empty text field]
- Description: [Empty text field]
- Tree view of categories:
  - Envelopes
  - General Indicator Functions
  - Math Function - Algebraic
  - Math Function - Trigonometric
  - Moving Averages
  - Operator - Comparison
  - Operator - Logical
  - Operator - Mathematical
  - Oscillators - Money Flow
  - Oscillators - Price** (expanded)
    - CCI
    - CenterOfGravity
    - CFO
    - ChandeForecastOscillator
    - ChandeMomentumOscillator
    - CMO
    - COG
    - CommodityChannelIndex (selected)
- Period: 14 (spin box)
- MaType: Simple (dropdown)
- Button: Create Script Line
- Preview: CommodityChannelIndex(14, Simple)
- Buttons: OK, Cancel



## Quant Script™ Study Dialog

**Custom Study Editor** [Close]

Save To Group: 3\_OSCILLATORS\_PRICE [Dropdown] A 8.25 [Dropdown]

Custom Study Name: CCI

Password: [Empty Field]

Result: Line [Dropdown] DashDotDot [Dropdown] 2 [Spinner] [Color Picker: Teal] [Color Picker: White]

Reverse\_Result: Line [Dropdown] DashDot [Dropdown] 2 [Spinner] [Color Picker: Purple] [Color Picker: White]

Formula Add To New Panel

```
SET RESULT = CCI(14, SIMPLE)
SET REVERSE_RESULT = CommodityChannelIndex(14, SIMPLE)
```

[OK] [Cancel]