



S-Trader





CFO | Chande Forecast Oscillator

Contents

Description	3
Formula	3
Parameters	3
Output value(s)	3
Plot	3
Quant Script™ Syntax	4
Dialogs	4
Chart Study Dialog	4
Sample Chart With Study	5
Quant Script™ Wizard Study Dialog	6
Quant Script™ Study Dialog	7



Description

The Chande Forecast Oscillator developed by Tushar Chande plots the percentage difference between the closing price and the n -period linear regression forecasted price. The oscillator is above zero when the forecast price is greater than the closing price and less than zero if it is below.

Formula

Step 1: For the requested n periods, we calculate the n period Linear Regression Forecast using the existing formulas;
Step 2: $CFO = 100 * (CLOSE_i - LRF_i) / CLOSE_i$

Parameters

Source	Any price source (O, H, L, C, Vol, OI) or any other built-in or custom study
Periods	Any number of periods

Output value(s)

There is one output value resulting from the formula, the Chande Forecast Oscillator.

Plot

The plot is in a separate panel at the bottom.

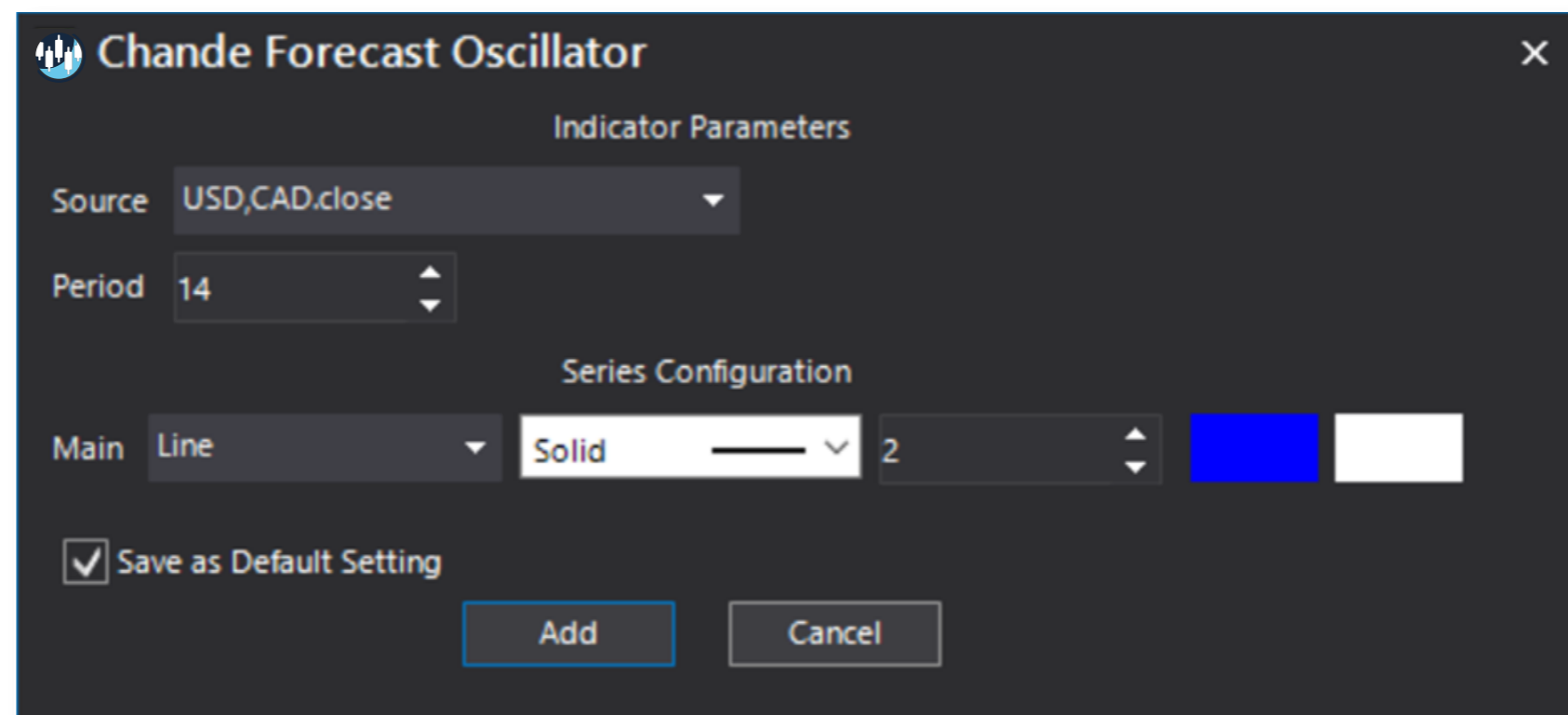


Quant Script™ Syntax

Short Form	<i>CFO</i> (Source, Periods)
Long Form	<i>ChandeForecastOscillator</i> (Source, Periods)

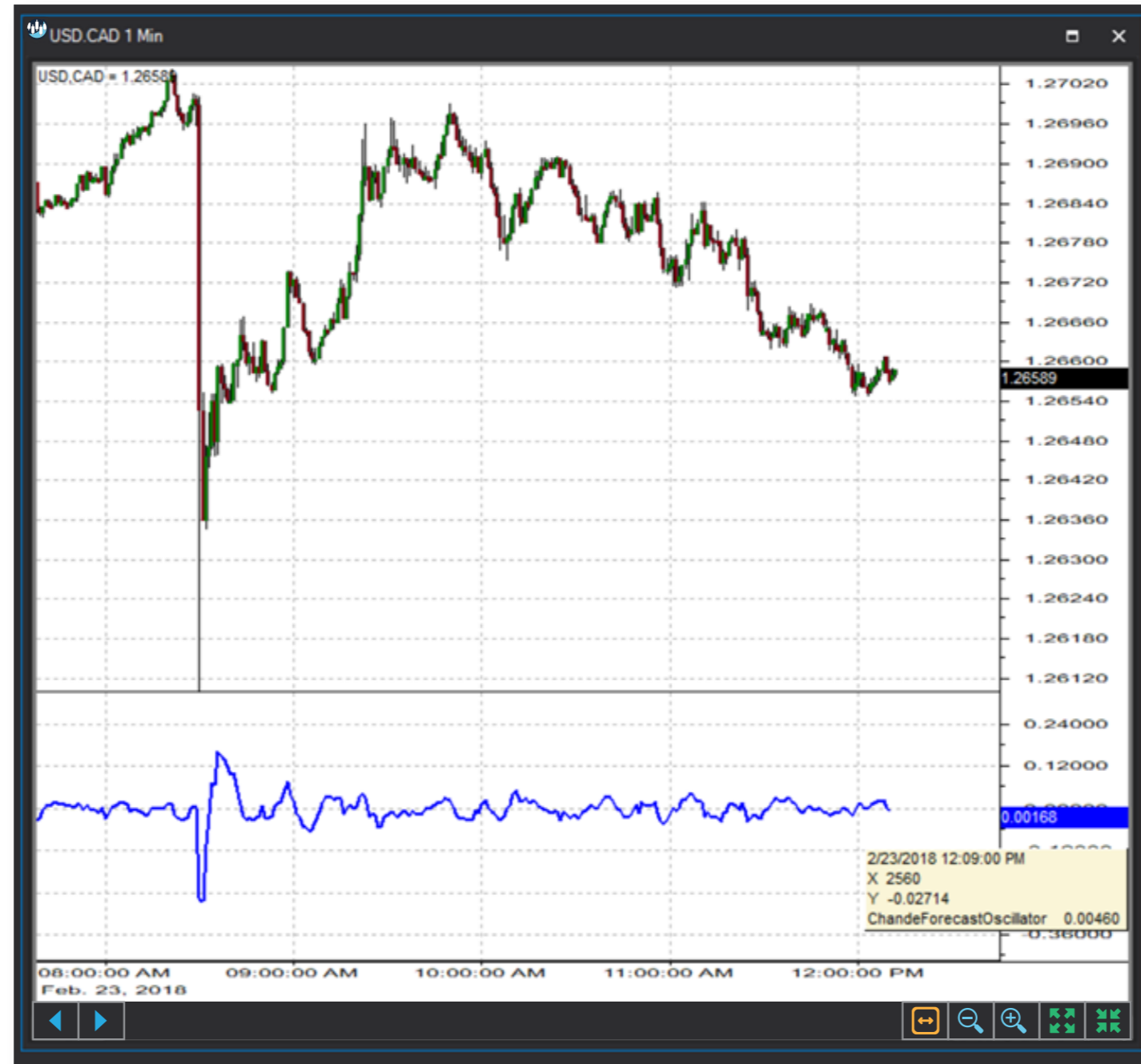
Dialogs

Chart Study Dialog





Sample Chart With Study





Quant Script™ Wizard Study Dialog

The image shows two overlapping dialog boxes from the S-Trader platform. The top dialog is titled "Custom Study Wizard" and contains the following fields and controls:

- Save To Group: Default (dropdown)
- Custom Study Name: [Empty text field]
- Password: [Empty text field]
- Result: Line (dropdown), DashDotDot (dropdown), 2 (spin box), [Color selection buttons]
- Reverse_Result: Line (dropdown), DashDot (dropdown), 2 (spin box), [Color selection buttons]
- Add To New Panel:
- Buttons: Add New Variable, Edit Selected Variable
- Table with columns: Name, Description

The bottom dialog is titled "Add Variable" and contains the following fields and controls:

- Name: [Empty text field]
- Description: [Empty text field]
- Tree view of categories:
 - Envelopes
 - General Indicator Functions
 - Math Function - Algebraic
 - Math Function - Trigonometric
 - Moving Averages
 - Operator - Comparison
 - Operator - Logical
 - Operator - Mathematical
 - Oscillators - Money Flow
 - Oscillators - Price (expanded)
 - CCI
 - CenterOfGravity
 - CFO
 - ChandeForecastOscillator (selected)
 - ChandeMomentumOscillator
 - CMO
 - COG
 - CommodityChannelIndex
- Source: CLOSE (dropdown)
- Period: 14 (spin box)
- Button: Create Script Line
- Preview text: ChandeForecastOscillator(CLOSE, 14)
- Buttons: OK, Cancel



Quant Script™ Study Dialog

Custom Study Editor [X]

Save To Group: 3_OSCILLATORS_PRICE [A] 8.25

Custom Study Name: CFO

Password: []

Result: Line [DashDotDot] 2 [Color Selection]

Reverse_Result: Line [DashDot] 2 [Color Selection]

Formula [Add To New Panel]

```
SET RESULT = CFO(Close,14)  
SET REVERSE_RESULT = ChandeForecastOscillator(CLOSE, 14)
```

[OK] [Cancel]