



S-Trader





ETH | Elder Thermometer ST (S-Trader)

Contents

Description	3
Formula	3
Parameters	3
Output value(s)	3
Plot	3
Quant Script™ Syntax	4
Dialogs	4
Chart Study Dialog	4
Sample Chart With Study	5
Quant Script™ Wizard Study Dialog	6
Quant Script™ Study Dialog	7



Description

This is a custom adaptation of the Elder Thermometer study developed by Dr. Alexander Elder. This indicator measures the extent and direction of range expansion or contraction over a specific period of time.

Formula

Step 1: Determine the Up Temperature = High Today – High n periods ago;

Step 2: Determine the Down Temperature = Low Today – Low n periods ago;

Step 3: Elder Thermometer Bull is set to 0 if Down Temp > Up Temp and is set to Up Temp if Up Temp > Down Temp;

Step 4: Elder Thermometer Bear is set to 0 if Down Temp < Up Temp and is set to Down Temp if Up Temp < Down Temp;

Step 5: Elder Thermometer is set to Up Temp if Down Temp < Up Temp and is set to Down Temp if Up Temp < Down Temp;

Parameters

Periods

Any number of periods

Output value(s)

There are two output values resulting from the formula, the Elder Thermometer Bear and Elder Thermometer Bull.

Plot

The plot is in a separate panel at the bottom.

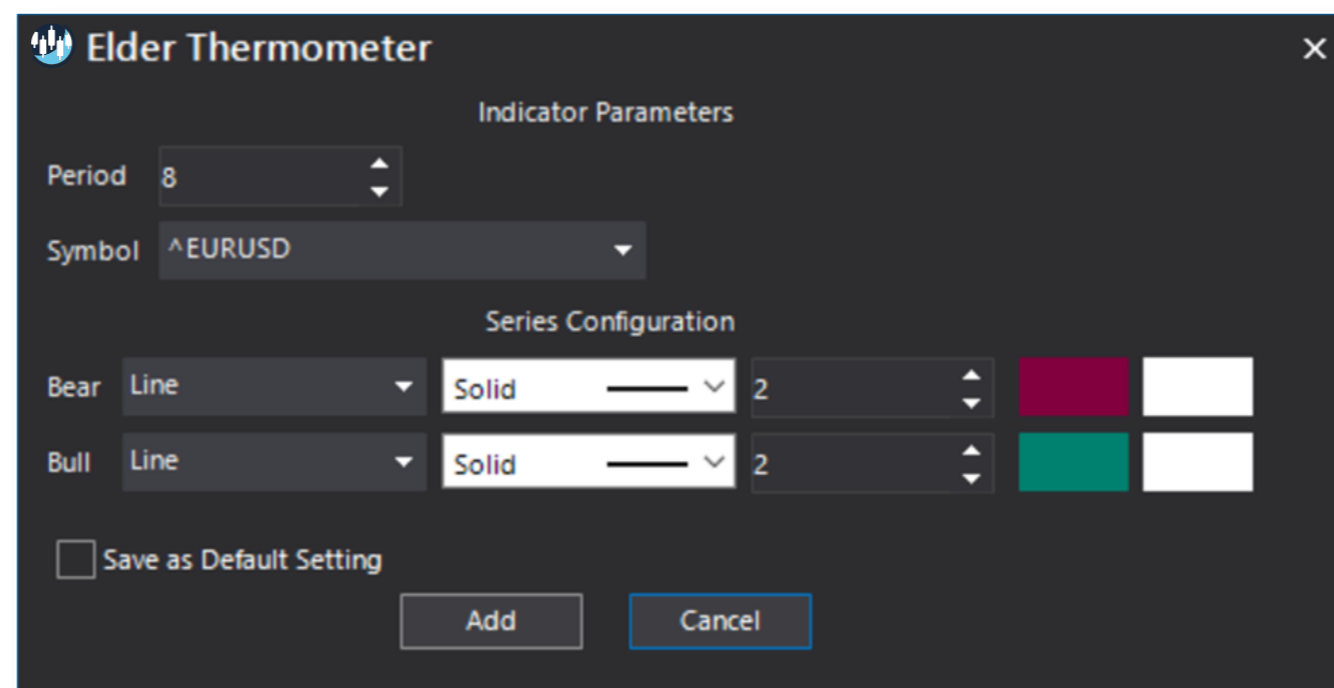


Quant Script™ Syntax

Short Form	<i>ETHR</i> (Periods)
	<i>ETHB</i> (Periods)
Long Form	<i>ElderThermometerBear</i> (Periods)
	<i>ElderThermometerBull</i> (Periods)

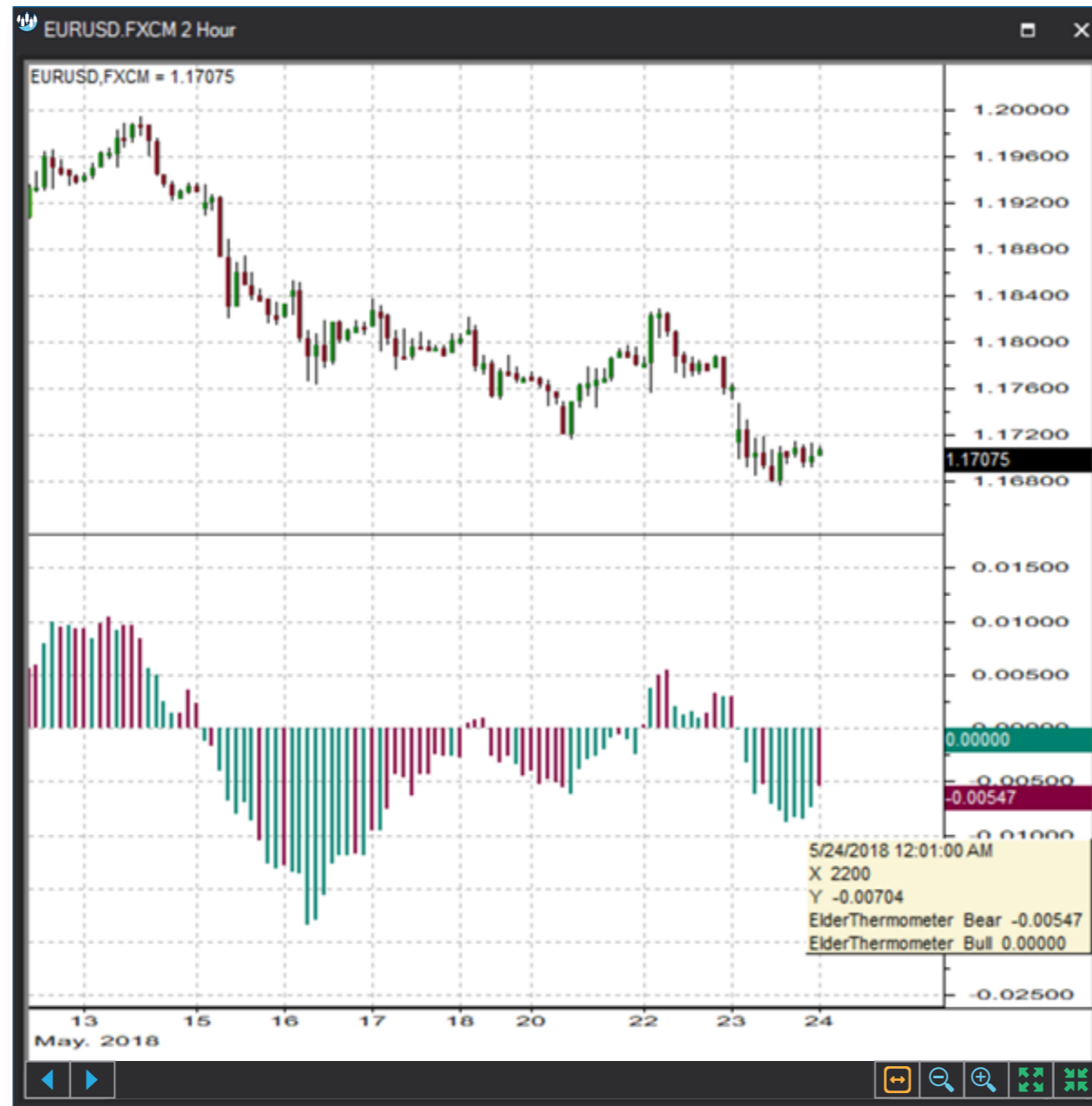
Dialogs

Chart Study Dialog





Sample Chart With Study





Quant Script™ Wizard Study Dialog

The image shows two overlapping dialog boxes from the S-Trader platform. The 'Custom Study Wizard' dialog is on the left, and the 'Add Variable' dialog is on the right.

Custom Study Wizard

- Save To Group: Default
- Custom Study Name: [Empty text box]
- Password: [Empty text box]
- Result: Line, Solid, 2, [Color swatches]
- Reverse_Result: Line, Solid, 2, [Color swatches]
- Buttons: Add To New Panel (checked), Add New Variable, Edit Selected Variable
- Table:

Name	Description
------	-------------
- Buttons: OK, Cancel

Add Variable

- Name: [Empty text box]
- Description: [Empty text box]
- Variable List:
 - CCI
 - CenterOfGravity
 - CFO
 - ChandeForecastOscillator
 - ChandeMomentumOscillator
 - CMO
 - COG
 - CommodityChannelIndex
 - CoppockCurve
 - CPKC
 - DetrendedPriceOscillator
 - DPO
 - ElderRayBearPower
 - ElderRayBullPower
 - ElderThermometerBear
 - ElderThermometerBull
 - ERBP
 - ...
- Period: 8
- Button: Create Script Line
- Text: ElderThermometerBear(8)
- Buttons: OK, Cancel



Quant Script™ Study Dialog

Custom Study Editor [Close]

Save To Group: 3_OSCILLATORS_PRICE [Dropdown] A 14.00 [Dropdown]

Custom Study Name: ETHR [Text Field]

Password: [Text Field]

Result: Line [Dropdown] Solid [Dropdown] 2 [Spinner] [Color Picker]

Reverse_Result: Line [Dropdown] Solid [Dropdown] 2 [Spinner] [Color Picker]

Formula [Add To New Panel

```
SET A1 = ETHB(8)
SET A2 = ElderThermometerBull(8)

SET B1 = ETHR(8)
SET B2 = ElderThermometerBear(8)
```

[OK] [Cancel]