



S-Trader





FCO | Fractal Chaos Oscillator

Contents

Description	3
Formula	3
Parameters	3
Output value(s)	3
Plot	4
Quant Script™ Syntax	4
Dialogs	4
Chart Study Dialog	4
Sample Chart With Study	5
Quant Script™ Wizard Study Dialog	6
Quant Script™ Study Dialog	7



Description

Australian based trader Edward W. Dreiss was the first man who started to use fractal geometry for the purpose of measuring the price movements of different securities. Widely used in mathematics, fractals are connected to chaos theory and abstract mathematics and are helpful when applied to the market, since the market itself is dynamic and nonlinear. In trading, fractals are referred to in their literal meaning, when used to divide larger trends into simple and predictable patterns, to predict reversals in the market development and determine repetitive samples that forecast 180 degrees turns among larger, more chaotic price spreads.

When looking at price movement charts, if the time scale is not given, sometimes it's very hard to determine whether the bars in the chart are referring to hours, days or months. The chart always looks exactly the same regardless of its time resolution, with the only difference being the size. To examine these patterns the Fractal Chaos Oscillator can be used to determine what is happening in the current level of resolution. The Fractal Chaos Oscillator is a great indicator to use in intra-day trading.

Formula

N/A

Parameters

Periods

Any number of periods

Output value(s)

There is one output value resulting from the formula, the Fractal Chaos Oscillator.



Plot

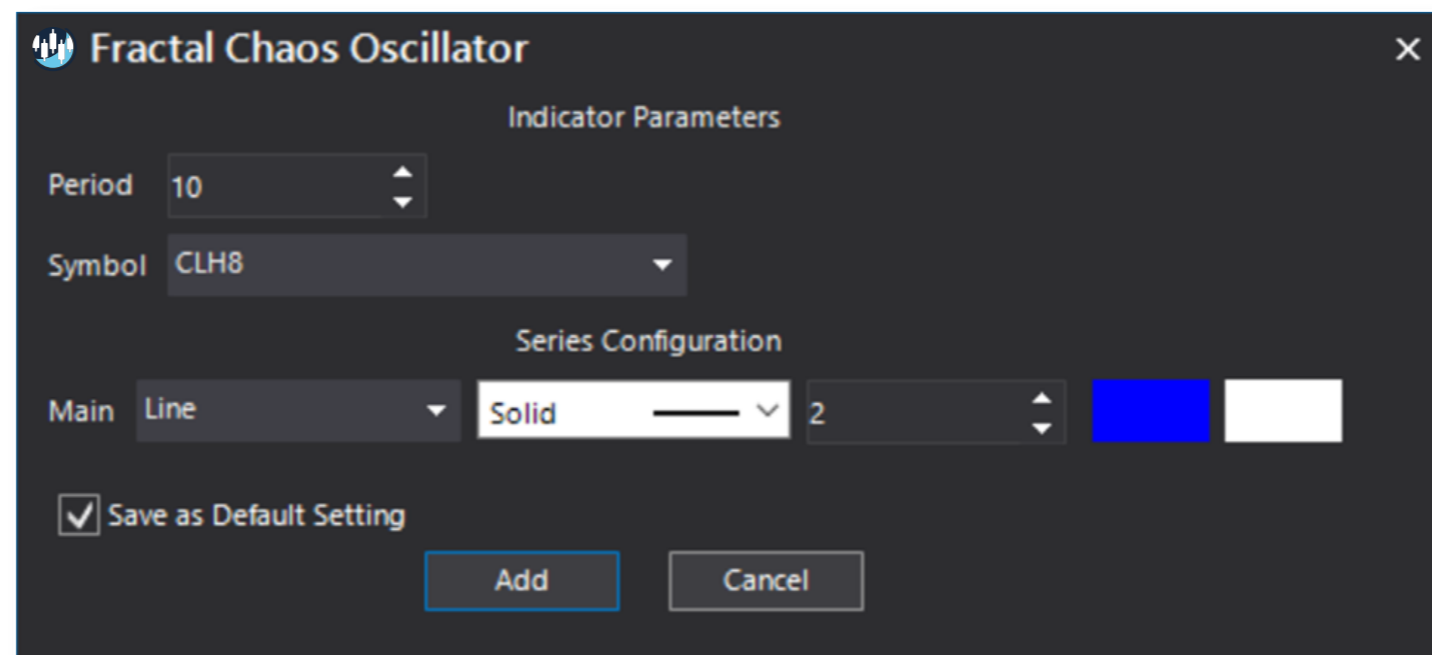
The plot is in a separate panel at the bottom.

Quant Script™ Syntax

Short Form	<i>FCO</i> (Periods)
Long Form	<i>FractalChaosOscillator</i> (Periods)

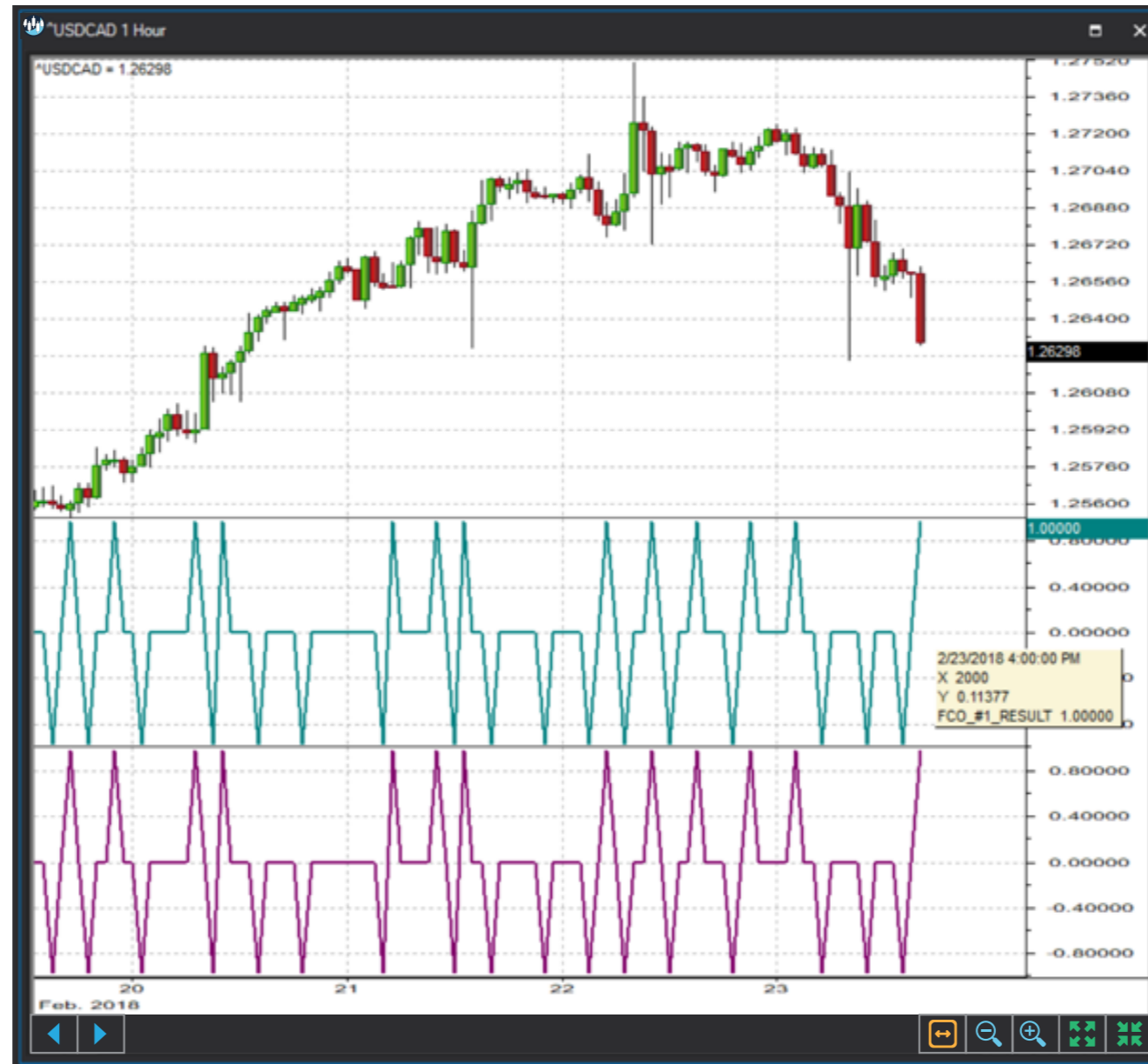
Dialogs

Chart Study Dialog



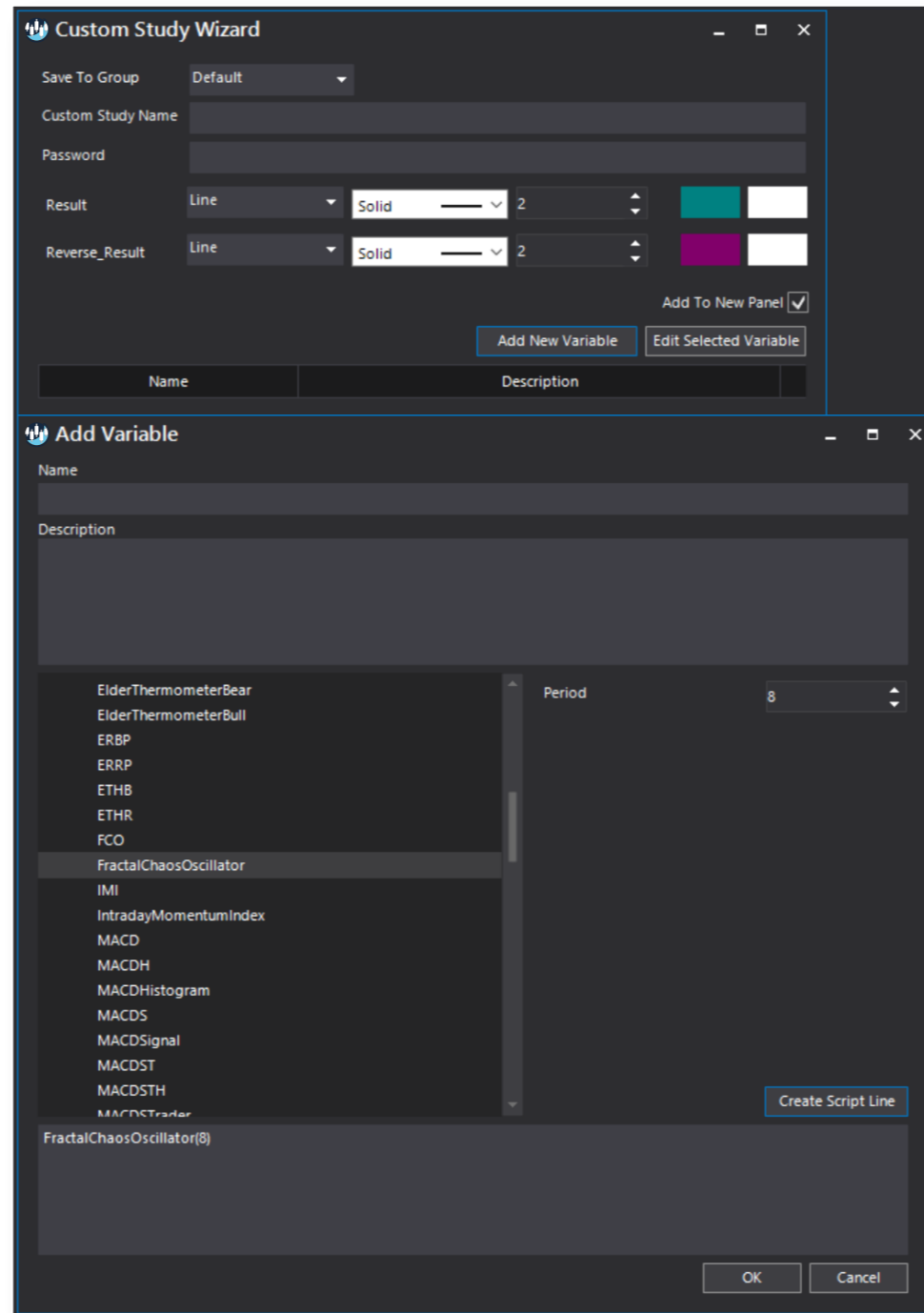


Sample Chart With Study





Quant Script™ Wizard Study Dialog





Quant Script™ Study Dialog

Custom Study Editor [Close]

Save To Group: 3_OSCILLATORS_PRICE [Dropdown] A: 14.00 [Dropdown]

Custom Study Name: ETHR [Text Field]

Password: [Text Field]

Result: Line [Dropdown] Solid [Dropdown] 2 [Spinner] [Color Picker: Teal]

Reverse_Result: Line [Dropdown] Solid [Dropdown] 2 [Spinner] [Color Picker: Purple]

Formula [Add To New Panel

```
SET A1 = ETHB(8)
SET A2 = ElderThermometerBull(8)

SET B1 = ETHR(8)
SET B2 = ElderThermometerBear(8)
```

[OK] [Cancel]