



S-Trader





PFI | Performance Index

Contents

Description	3
Formula	3
Parameters	3
Output value(s)	3
Plot	3
Quant Script™ Syntax	3
Dialogs	4
Chart Study Dialog	4
Sample Chart With Study	5
Quant Script™ Wizard Study Dialog	6
Quant Script™ Study Dialog	7



Description

The performance index transforms an entire data series into rates of change from a base period at the beginning of the series.

Formula

Step 1: $PFI = 100 * (\text{Current Value} - \text{First Value}) / (\text{First Value})$.

Parameters

Source

Any price source (O, H, L, C, Vol, OI) or any other built-in or custom study

Output value(s)

There is one output value resulting from the formula, the Performance Index.

Plot

The plot is in a separate panel at the bottom.

Quant Script™ Syntax

Short Form

PFI(Source)

Long Form

PerformanceIndex(Source)



Dialogs

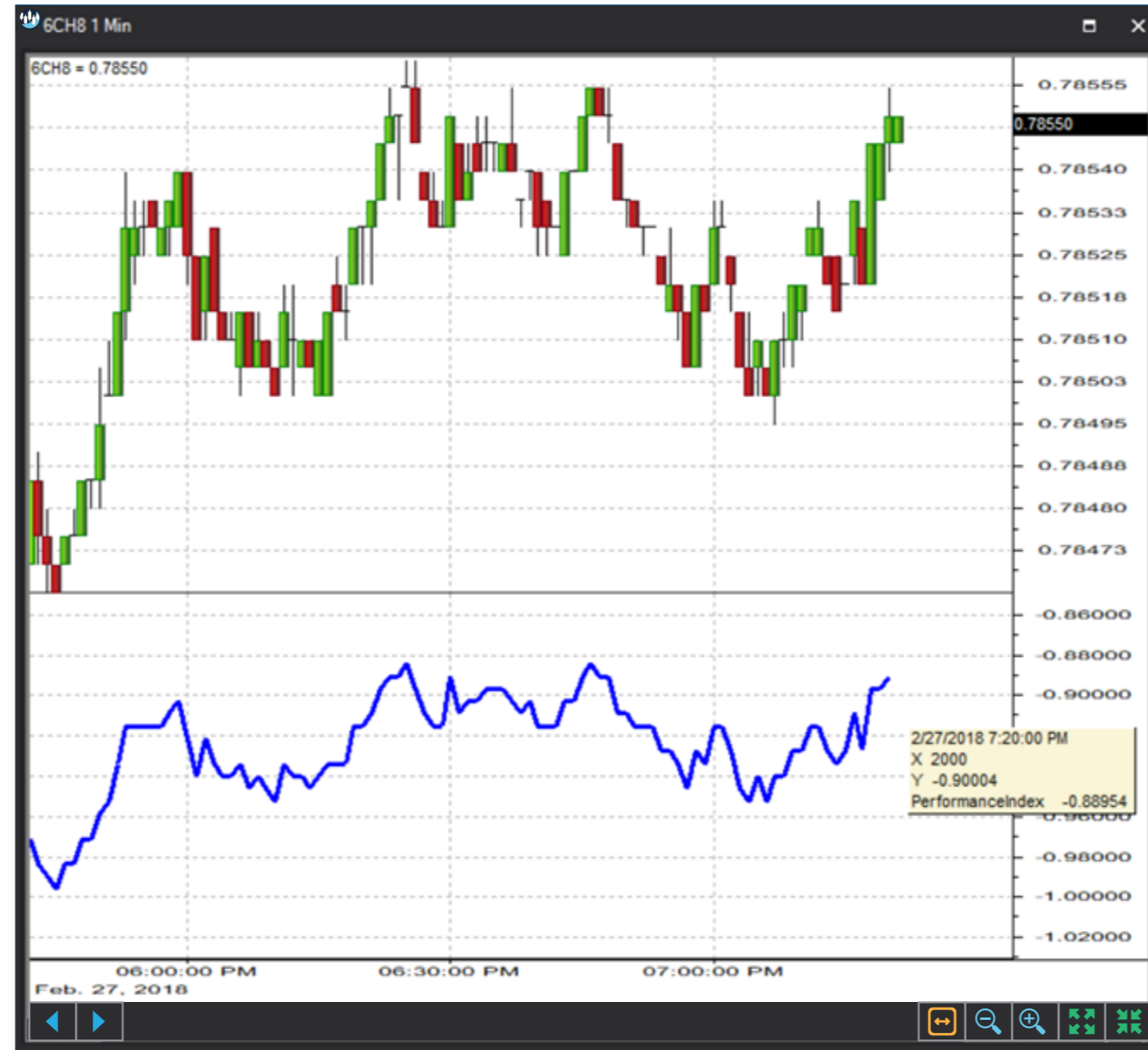
Chart Study Dialog

The dialog box is titled "Performance Index" and contains the following settings:

- Indicator Parameters:**
 - Source: 6CH8.close
- Series Configuration:**
 - Main: Line
 - Style: Solid
 - Thickness: 3
 - Color: Blue
 - Background: White
- Save as Default Setting
- Buttons: Add, Cancel



Sample Chart With Study





Quant Script™ Wizard Study Dialog

The image shows two overlapping dialog boxes from the S-Trader platform. The top dialog is titled "Custom Study Wizard" and contains the following fields and controls:

- Save To Group: Default (dropdown)
- Custom Study Name: [Text Input]
- Password: [Text Input]
- Result: Line (dropdown), Solid (dropdown), 2 (spin box), [Color Picker]
- Reverse_Result: Line (dropdown), Solid (dropdown), 2 (spin box), [Color Picker]
- Add To New Panel:
- Buttons: Add New Variable, Edit Selected Variable
- Table with columns: Name, Description

The bottom dialog is titled "Add Variable" and contains the following fields and controls:

- Name: [Text Input]
- Description: [Text Input]
- Source List: A scrollable list of variables including MACDHistogram, MACDS, MACDSignal, MACDST, MACDSTH, MACDTrader, MACDTraderHistogram, MACDTraderSignal, MACDSTS, MACDStudy, MO, MomentumOscillator, ParabolicSAR, PercentagePriceOscillator, PercentagePriceOscillatorHistogram, PercentagePriceOscillatorSignal, PerformanceIndex, and PFI.
- Source: CLOSE (dropdown)
- Button: Create Script Line
- Preview: PerformanceIndex(CLOSE)
- Buttons: OK, Cancel



Quant Script™ Study Dialog

Custom Study Editor [X]

Save To Group: 3_OSCILLATORS_PRICE [A] 14.00

Custom Study Name: PFI

Password: []

Result: Line [Solid] 2 [Color: Teal]

Reverse_Result: Line [Solid] 2 [Color: Purple]

Formula [Add To New Panel]

```
SET RESULT = PFI(CLOSE)
SET REVERSE_RESULT = PerformanceIndex(CLOSE)
```

[OK] [Cancel]