



S-Trader





CMF | Chaikin Money Flow

Contents

Description	3
Formula	3
Parameters	3
Output value(s)	3
Plot	3
Quant Script™ Syntax	4
Dialogs	4
Chart Study Dialog	4
Sample Chart With Study	5
Quant Script™ Wizard Study Dialog	6
Quant Script™ Study Dialog	7



Description

Developed by Marc Chaikin, Chaikin Money Flow (CMF) measures the amount of Money Flow Volume over a specific period. Money Flow Volume forms the basis for the Accumulation Distribution Line. Instead of a cumulative total of Money Flow Volume, Chaikin Money Flow simply sums Money Flow Volume for a specific look-back period, typically 20 or 21 days. The resulting indicator fluctuates above/below the zero line just like an oscillator. Chartists weigh the balance of buying or selling pressure with the absolute level of Chaikin Money Flow. Chartists can also look for crosses above or below the zero line to identify changes on money flow.

Formula

Step 1: Calculate for the each period Money Flow Multiplier = $MFM = [(CLOSE-LOW) - (HIGH - CLOSE)] / (HIGH - LOW)$

Step 2: Calculate Money Flow Volume , $MFV = MFM * Volume$ for the period

Step 3: Calculate n PERIOD sum of MFV, $(MFVi)$ and the n PERIOD sum of VOLUME, (Vi)

Step 4: $CMF = \text{Chaikin Money Flow} = (MFVi) / (Vi)$

Parameters

Periods

Any number of periods

Output value(s)

There is one output value resulting from the formula, the Chaikin Money Flow.

Plot

The plot is in a separate panel at the bottom.



Quant Script™ Syntax

Short Form	<i>CMF</i> (Periods)
Long Form	<i>ChaikinMoneyFlow</i> (Periods)

Dialogs

Chart Study Dialog

Chaikin Money Flow [X]

Indicator Parameters

Symbol: ^USDCAD

Period: 10

Series Configuration

Main: Line

Style: Solid

Width: 2

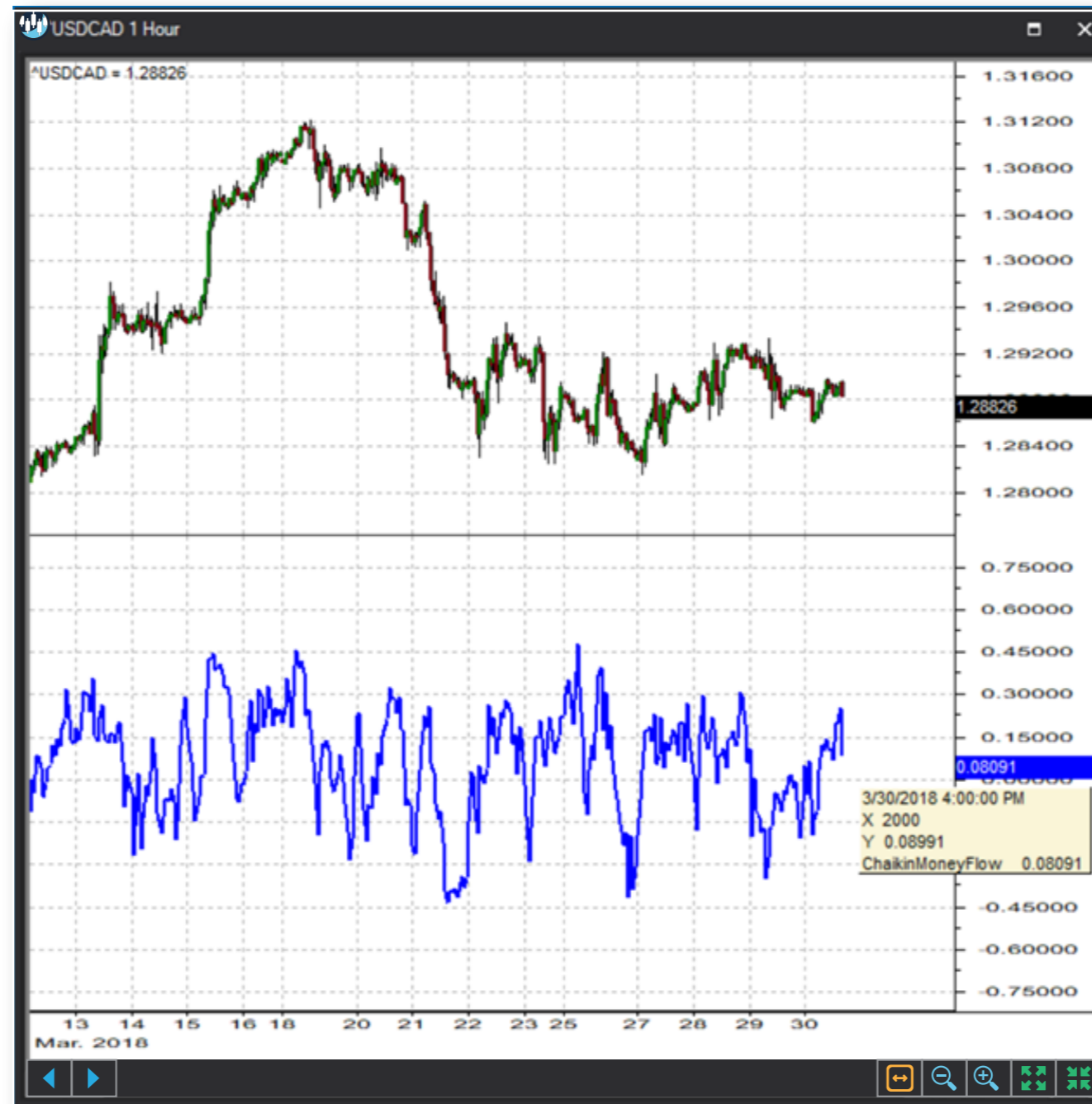
Color: [Blue] [White]

Save as Default Setting

[Add] [Cancel]



Sample Chart With Study





Quant Script™ Wizard Study Dialog

The image shows two overlapping dialog boxes in the S-Trader desktop platform. The 'Custom Study Wizard' dialog is on the left, and the 'Add Variable' dialog is on the right.

Custom Study Wizard

- Save To Group: Default
- Custom Study Name: [Empty text box]
- Password: [Empty text box]
- Result: Line, Solid, 2, [Color swatches]
- Reverse_Result: Line, Solid, 2, [Color swatches]
- Buttons: Add To New Panel (checked), Add New Variable, Edit Selected Variable
- Table:

Name	Description
------	-------------
- Buttons: OK, Cancel

Add Variable

- Name: [Empty text box]
- Description: [Empty text box]
- Period: 10
- Tree view:
 - Envelopes
 - General Indicator Functions
 - Math Function - Algebraic
 - Math Function - Trigonometric
 - Moving Averages
 - Operator - Comparison
 - Operator - Logical
 - Operator - Mathematical
 - Oscillators - Money Flow
 - AccDistCummulative
 - AccDistIndividual
 - ADI
 - ADT
 - ChaikinMoneyFlow
 - CMF
 - EaseOfMovement
 - EFI
 - ElderForceIndex

- Buttons: Create Script Line, OK, Cancel



Quant Script™ Study Dialog

Custom Study Editor

Save To Group: 4_OSCILLATORS_MONEY_FLC A 14.25

Custom Study Name: CMF

Password:

Result: Line | Solid | 2

Reverse_Result: Line | Solid | 2

Formula Add To New Panel

```
SET RESULT = CMF(10)
SET REVERSE_RESULT = ChaikinMoneyFlow(10)
```