



S-Trader



2673

14.86

12.28

8.81

12.07

2.77

10.97

21.72

12.59

6.98

3.15

5.28

2.11

3.09

7.87

16.84

13.03

12.24

15.97

1.62

0.77

1.95

8.45

4.52

1.11

1.51

2.58

1.53

+0.52%

+0.18%

+0.18%

+0.18%

+0.40%

+0.40%

20580

12734

2918

10383

9487

28025

18775

791

10383

9487

2673

1749

2000

791

18775

10383

9487

28025

20580

12734

2918

15.15

15.68

14.45

22.67

2.11

2.92

2.77

10.97

21.72

12.59

6.98

14.86

12.28

8.81

12.07

15.76

2.63

7.87

16.84

13.03

12.24

15.97

3.15

5.28

2.11

3.09

7.87

16.84

13.03

12.24

2.58

1.53

1.62

0.77

1.95

8.45

4.52

1.11

1.51

2.58

1.53

1.53

1.62

0.77

1.95

8.45

4.52

1.11

1.51

2.58

1.53

1.53

1.62

0.77

1.95

8.45

4.52

1.11

1.51

2.58

1.53

1.53

1.62

0.77

1.95

8.45

4.52

1.11

1.51

2.58

1.53

1.53



EOM | Ease Of Movement

Contents

Description	3
Formula	3
Parameters	3
Output value(s)	3
Plot	4
Quant Script™ Syntax	4
Dialogs	4
Chart Study Dialog	4
Sample Chart With Study	5
Quant Script™ Wizard Study Dialog	6
Quant Script™ Study Dialog	7



Description

Developed by Richard Arms, Ease of Movement (EOM) is a volume-based oscillator that fluctuates above and below the zero line. As its name implies, it is designed to measure the “ease” of price movement. Arms created Equivolume charts to visually display price ranges and volume. Ease of Movement takes Equivolume to the next level by quantifying the price/volume relationship and showing the results as an oscillator. In general, prices are advancing with relative ease when the oscillator is in positive territory. Conversely, prices are declining with relative ease when the oscillator is in negative territory.

Formula

Step 1: Calculate MP = Median Price = $(High + Low)/2$; THEN Calculate DM = Distance Moved = Current MP – Previous MP

Step 2: Calculate BR = Box Ratio = $(Volume / 100,000,000) / (High - Low)$

Step 3: Calculate EMV1 = 1 period ease of movement = DM / BR

Step 4: Calculate EOM = a moving average of EMV1 for the requested n periods and moving average type

Parameters

Periods	Any number of periods
MA Type	Any available moving average type

Output value(s)

There is one output value resulting from the formula, the Ease Of Movement.



Plot

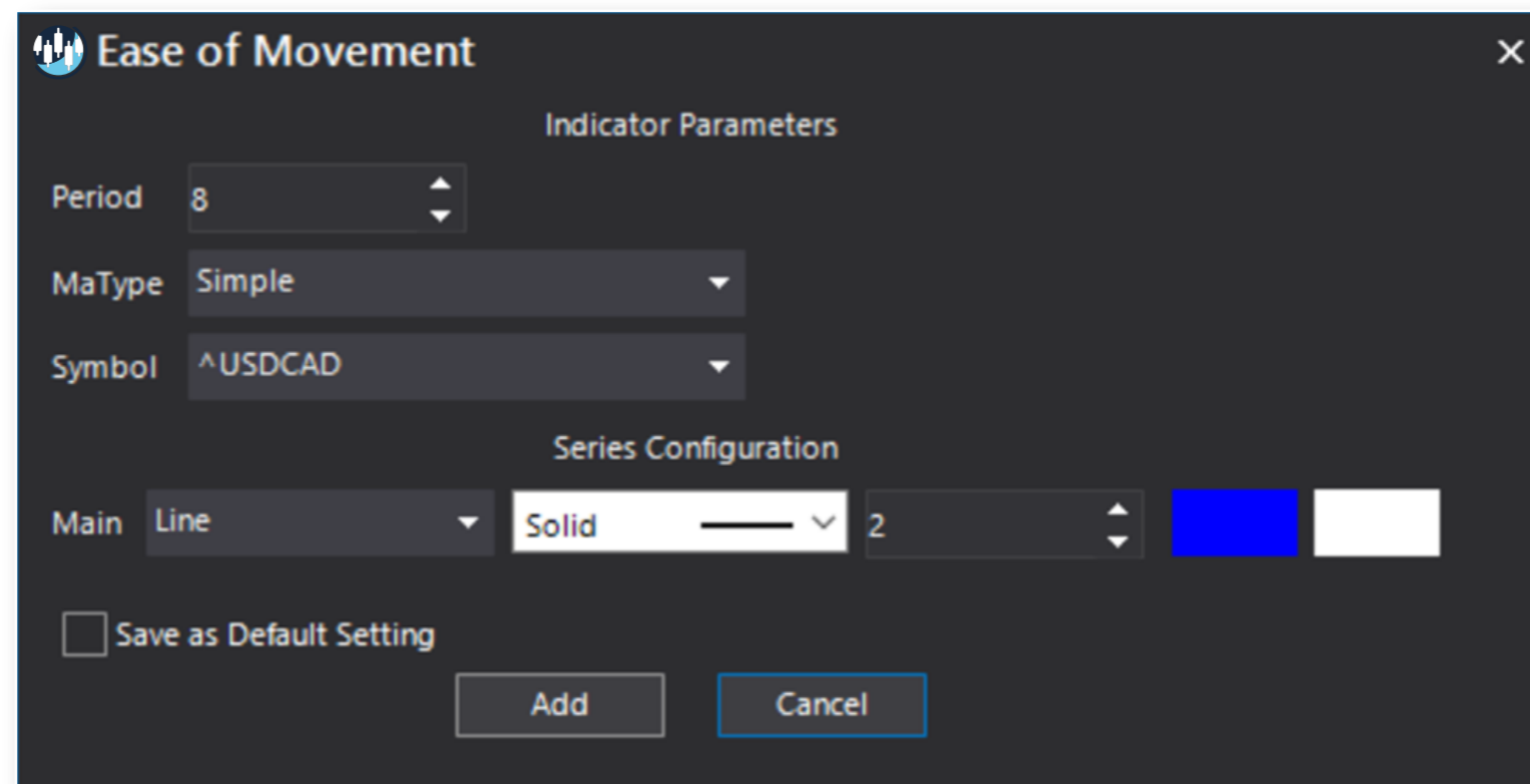
The plot is in a separate panel at the bottom.

Quant Script™ Syntax

Short Form	<i>EOM</i> (Periods, MA Type)
Long Form	<i>EaseOfMovement</i> (Periods, MA Type)

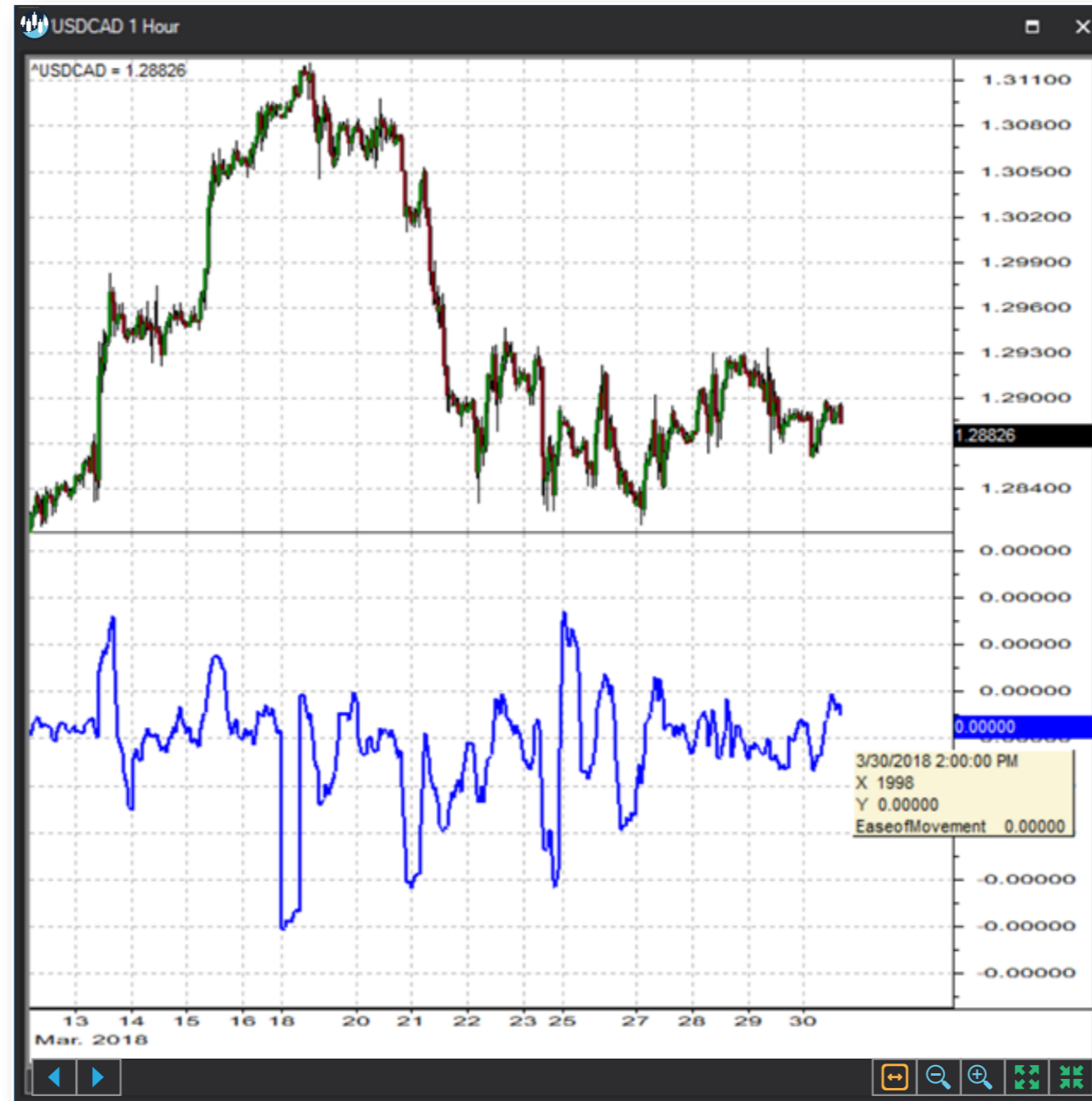
Dialogs

Chart Study Dialog





Sample Chart With Study





Quant Script™ Wizard Study Dialog

The image shows two overlapping dialog boxes in the S-Trader desktop platform. The background dialog is the 'Custom Study Wizard' and the foreground dialog is the 'Add Variable' dialog.

Custom Study Wizard Dialog:

- Save To Group: Default
- Custom Study Name: [Empty text field]
- Password: [Empty text field]
- Result: Line, Solid, 2, [Color swatches]
- Reverse_Result: Line, Solid, 2, [Color swatches]
- Buttons: Add To New Panel (checked), Add New Variable, Edit Selected Variable
- Table with columns: Name, Description
- Buttons: OK, Cancel

Add Variable Dialog:

- Name: [Empty text field]
- Description: [Empty text field]
- Category: Oscillators - Money Flow
- List of variables: AccDistCumulative, AccDistIndividual, ADI, ADT, ChaikinMoneyFlow, CMF, EaseOfMovement, EFI, ElderForceIndex, EOM, KlingerVolumeOscillator, KlingerVolumeOscillatorHistogram, KlingerVolumeOscillatorSignal, KVO, KVOH, KVOS, MarketFacilitationIndex
- Period: 8
- MaType: Simple
- Button: Create Script Line
- Preview: EaseOfMovement(8, Simple)
- Buttons: OK, Cancel



Quant Script™ Study Dialog

Custom Study Editor

Save To Group: 4_OSCILLATORS_MONEY_FLC

Custom Study Name: EOM

Password:

Result: Line, Solid, 2

Reverse_Result: Line, Solid, 2

Formula:

```
SET RESULT = EOM(8, Simple)
SET REVERSE_RESULT = EaseOfMovement(8, Simple)
```

Buttons: OK, Cancel