



**S-Trader**



2673

14.86

12.28

8.81

2.11

12.07

15.76

2.63

7.87

10.97

21.72

12.59

6.98

3.15

5.28

1.62

2.11

3.09

1.95

8.45

4.52

1.11

1.51

2.58

1.53

+0.52%

+0.18%

+0.18%

+0.18%

+0.40%

20580

12734

2918

28025

10383

9487

18775

791

200

7149

15.69

15.15

2.11

2.77

10.97

21.72

12.59

6.98

2.11

2.77

7.87

16.84

13.03

12.24

15.97

12.07

15.76

2.63

4.52

1.11

1.51

2.58

1.53

3.09

1.95

8.45

8.45

1.11

1.51

2.58

1.53

3.09

1.95

8.45

1.62

5.28

3.15

14.86

12.28

8.81

2.11

12.07

1.62

5.28

3.15

14.86

12.28

8.81

2.11

12.07



## MKTFI | Market Facilitation Index

### Contents

Description .....	3
Formula .....	3
Parameters .....	3
Output value(s) .....	4
Plot .....	4
Quant Script™ Syntax .....	4
Dialogs .....	4
Chart Study Dialog .....	4
Sample Chart With Study .....	5
Quant Script™ Wizard Study Dialog .....	6
Quant Script™ Study Dialog .....	7



## Description

Market Facilitation Index is the indicator which evaluates the willingness of the market to move the price. The indicator's absolute values alone cannot provide any trading signals unlike its dynamics in relation to the dynamics of the volume.

The absolute values of the index are represented by the histogram's bars while the comparison of the index and volume dynamics are given in colors which are vital in terms of reading the indicator signs.

- Green bar - both MFI and volume are up. Increasing trading activity means market movement acceleration. We may join the trend.
- Blue bar - MFI indicator is up, volume is down. The movement is continuing although the volume has dropped. The trend will soon be reversing.
- Pink bar - MFI indicator is down, volume is up. The slowing down movement while volume is raising may indicate a possible break through, often a U-turn.
- Brown bar - both MFI and volume are down. The market is no longer interested in the current direction and is looking for signs of a future development.

## Formula

$MFI = (High - Low) / Volume$

## Parameters

None

N/A



## Output value(s)

There is one output value resulting from the formula, the Market Facilitation Index.

## Plot

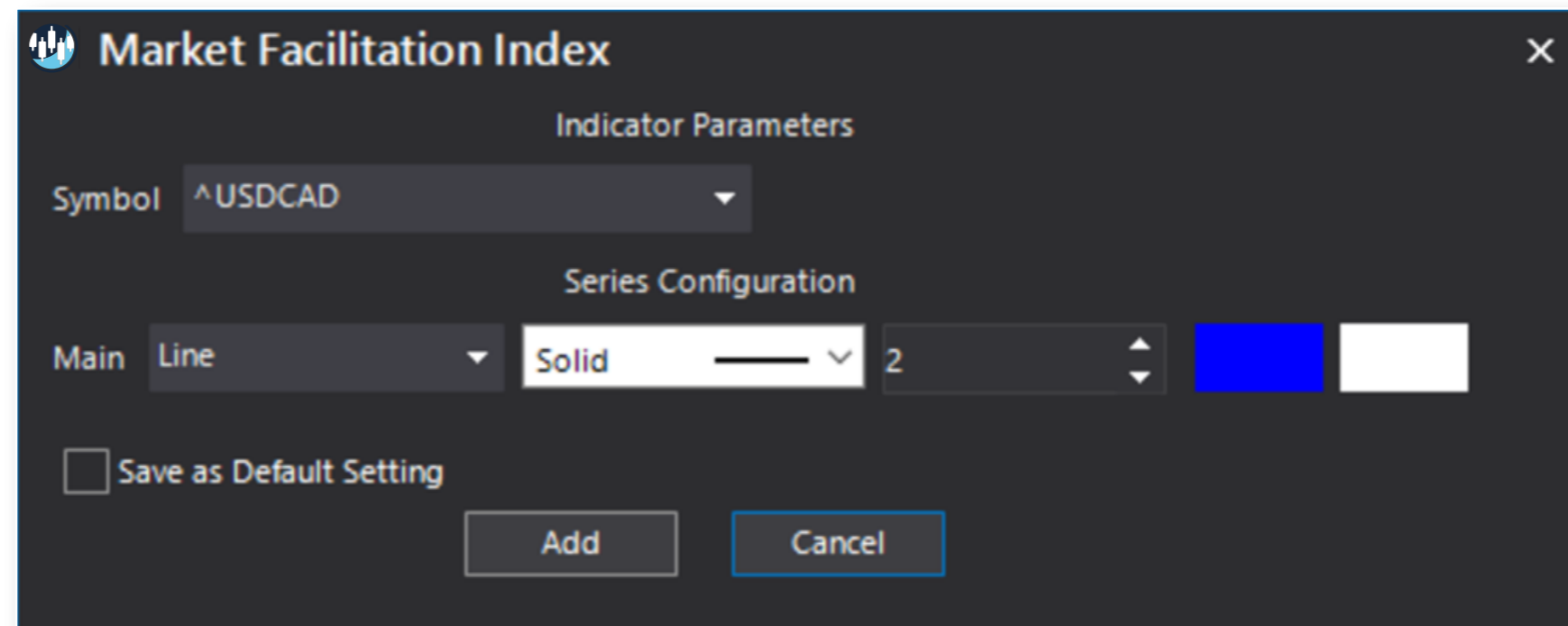
The plot is in a separate panel at the bottom.

## Quant Script™ Syntax

<b>Short Form</b>	<i>MKTFI()</i>
<b>Long Form</b>	<i>MarketFacilitationIndex()</i>

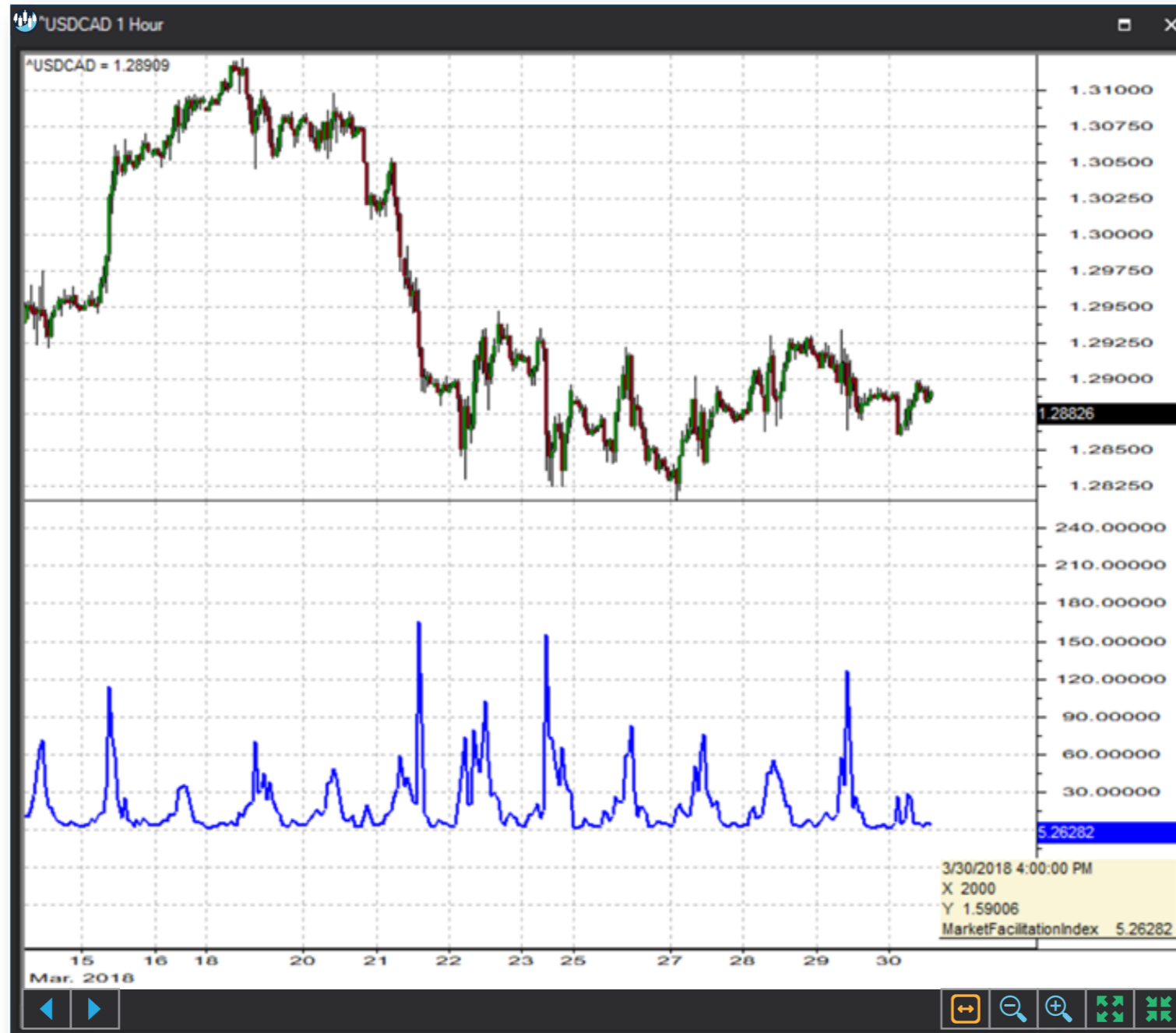
## Dialogs

### Chart Study Dialog





## Sample Chart With Study





## Quant Script™ Wizard Study Dialog

**Custom Study Wizard**

Save To Group: Default

Custom Study Name: \_\_\_\_\_

Password: \_\_\_\_\_

Result: Line | Solid | 2 | [Color swatches]

Reverse\_Result: Line | Solid | 2 | [Color swatches]

Add To New Panel

Name	Description
------	-------------

**Add Variable**

Name: \_\_\_\_\_

Description: \_\_\_\_\_

- KlingerVolumeOscillator
- KlingerVolumeOscillatorHistogram
- KlingerVolumeOscillatorSignal
- KVO
- KVOH
- KVOS
- MarketFacilitationIndex**
- MFI
- MKTFI
- MoneyFlowIndex
- NegativeVolumeIndex
- NVI
- OBV
- OnBalanceVolume
- PositiveVolumeIndex
- PriceVolumeTrend
- PVI
- PVT

MarketFacilitationIndex()



## Quant Script™ Study Dialog

**Custom Study Editor**

Save To Group: 4\_OSCILLATORS\_MONEY\_FLC A 13.25

Custom Study Name: MKTFI

Password:

Result: Line Solid 2

Reverse\_Result: Line Solid 2

Formula Add To New Panel

```
SET RESULT = MKTFI()
SET REVERSE_RESULT = MarketFacilitationIndex()
```

OK Cancel