



**S-Trader**





## OBV | On-Balance Volume

### Contents

Description .....	3
Formula .....	3
Parameters .....	3
Output value(s) .....	3
Plot .....	3
Quant Script™ Syntax .....	4
Dialogs .....	4
Chart Study Dialog .....	4
Sample Chart With Study .....	5
Quant Script™ Wizard Study Dialog .....	6
Quant Script™ Study Dialog .....	7



## Description

On Balance Volume (OBV) measures buying and selling pressure as a cumulative indicator that adds volume on up days and subtracts volume on down days. OBV was developed by Joe Granville and introduced in his 1963 book, Granville's New Key to Stock Market Profits. It was one of the first indicators to measure positive and negative volume flow. Chartists can look for divergences between OBV and price to predict price movements or use OBV to confirm price trends.

## Formula

Step 1: Initial OBV = 0

Step 2: Calculate Coefficient:

- IF(Source Current > Source Previous , Coefficient = 1)
- IF(Source Current < Source Previous , Coefficient = -1)
- IF(Source Current = Source Previous , Coefficient = 0)

Step 3: Period OBV = Coefficient \* Volume for the period

Step 4: Cumulative OBV = Previous period Cumulative OBV + Current Period OBV

## Parameters

**Source**

Any price source (O, H, L, C, OI) or any other built-in or custom study

## Output value(s)

There is one output value resulting from the formula, the On-Balance Volume.

## Plot

The plot is in a separate panel at the bottom.



## Quant Script™ Syntax

<b>Short Form</b>	<i>OBV</i> (Source)
<b>Long Form</b>	<i>OnBalanceVolume</i> (Source)

## Dialogs

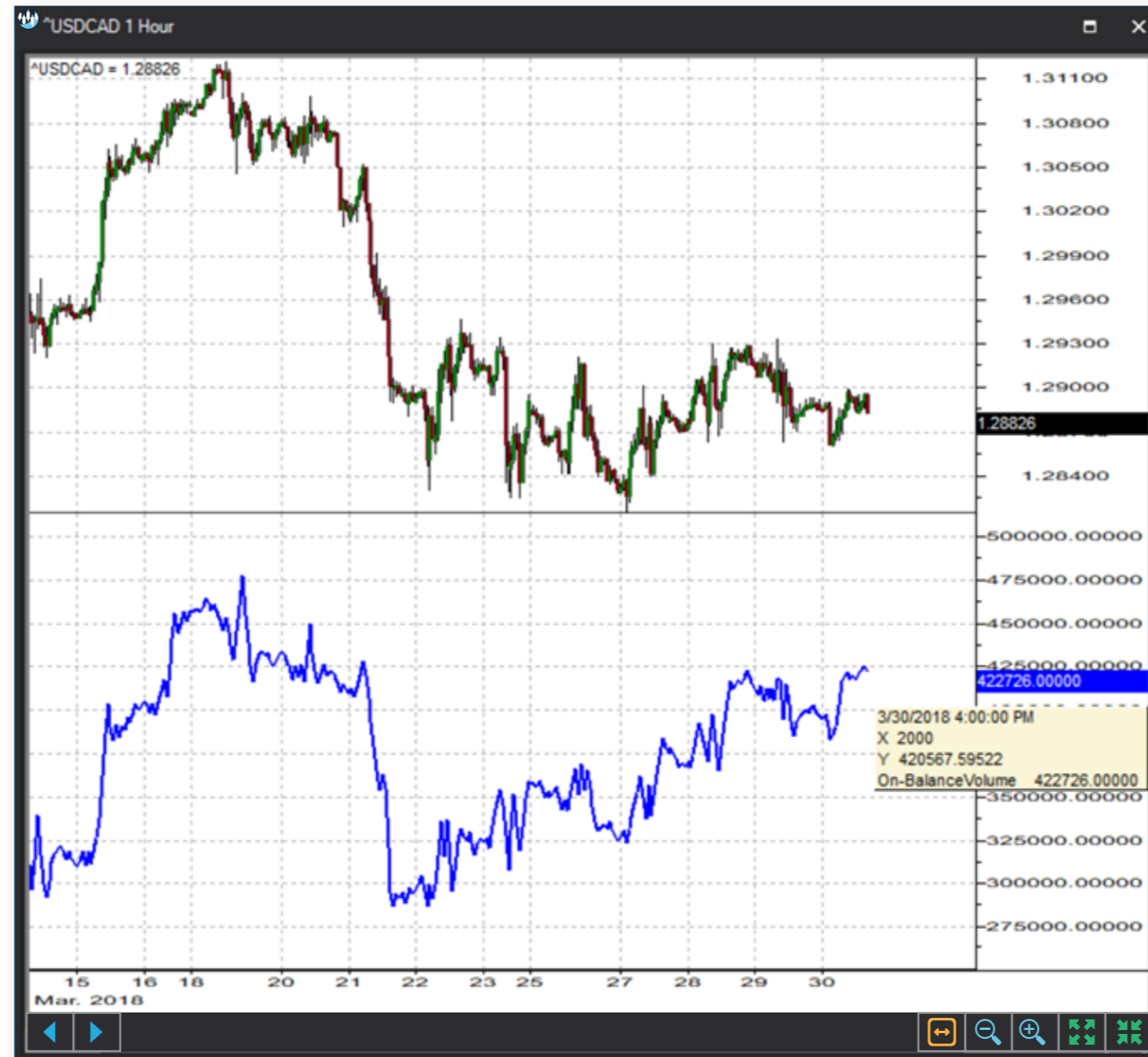
### Chart Study Dialog

The screenshot shows the 'On-Balance Volume' dialog box with the following settings:

- Indicator Parameters:**
  - Symbol: ^USDCAD
  - Source: ^USDCAD.close
- Series Configuration:**
  - Main: Line
  - Style: Solid
  - Width: 2
  - Color: Blue
  - Background: White
- Save as Default Setting
- Buttons: Add, Cancel



## Sample Chart With Study





## Quant Script™ Wizard Study Dialog

The image shows two overlapping dialog boxes in the S-Trader desktop platform. The 'Custom Study Wizard' dialog is on the left, and the 'Add Variable' dialog is on the right.

**Custom Study Wizard**

- Save To Group: Default
- Custom Study Name: [Empty text box]
- Password: [Empty text box]
- Result: Line, Solid, 2, [Color swatches]
- Reverse\_Result: Line, Solid, 2, [Color swatches]
- Add To New Panel:
- Buttons: Add New Variable, Edit Selected Variable
- Table with columns: Name, Description
- Buttons: OK, Cancel

**Add Variable**

- Name: [Empty text box]
- Description: [Empty text box]
- Source: [List of variables]
- Source dropdown: CLOSE
- Button: Create Script Line
- Text: OnBalanceVolume(CLOSE)
- Buttons: OK, Cancel



## Quant Script™ Study Dialog

Custom Study Editor

Save To Group: 4\_OSCILLATORS\_MONEY\_FLC

Custom Study Name: OBV

Password:

Result: Line, Solid, 2, [Teal Swatch]

Reverse\_Result: Line, Solid, 2, [Purple Swatch]

Formula: SET RESULT = OBV(CLOSE)  
SET REVERSE\_RESULT = OnBalanceVolume(CLOSE)

Add To New Panel

OK Cancel