



**S-Trader**





## PVT | Price Volume Trend

### Contents

Description .....	3
Formula .....	3
Parameters .....	3
Output value(s) .....	3
Plot .....	3
Quant Script™ Syntax .....	4
Dialogs .....	4
Chart Study Dialog .....	4
Sample Chart With Study .....	5
Quant Script™ Wizard Study Dialog .....	6
Quant Script™ Study Dialog .....	7



## Description

Price Volume Trend (PVT) combines percentage price change and volume in an attempt to confirm or invalidate the strength of price trends through actual trading volumes. Unlike other price-volume indicators, the Price Volume Trend takes into consideration the percentage increase or decrease in price, rather than just simply adding or subtracting volume based on whether the current price is higher than the previous day's price.

## Formula

Step 1: Initial PVT = 0

Step 2: Cumulative PVT = PVT Previous + Volume \* (Source – Source Previous) / Source Previous

## Parameters

### Source

Any price source (O, H, L, C, OI) or any other built-in or custom study

## Output value(s)

There is one output value resulting from the formula, the Price Volume Trend.

## Plot

The plot is in a separate panel at the bottom.

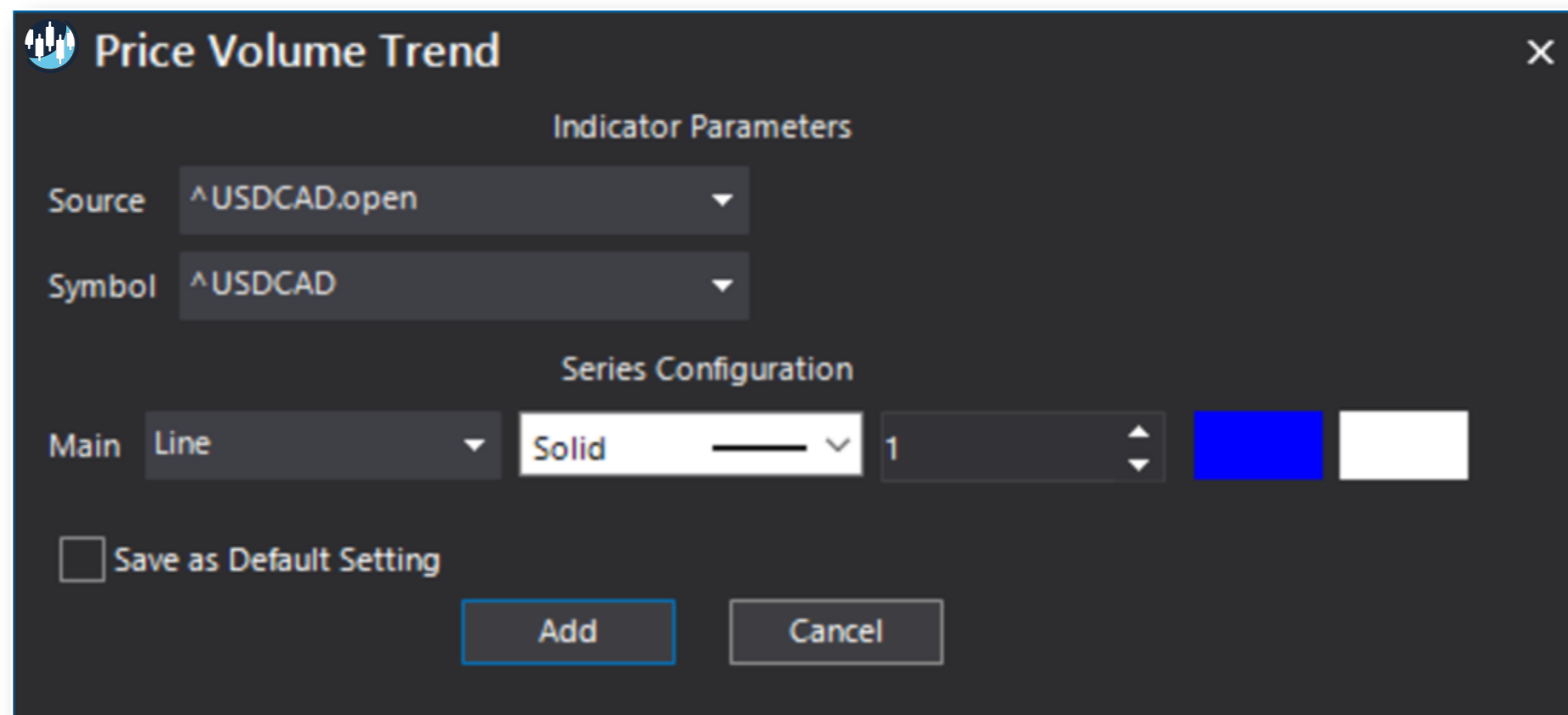


## Quant Script™ Syntax

<b>Short Form</b>	<i>PVT</i> (Source)
<b>Long Form</b>	<i>PriceVolumeTrend</i> (Source)

## Dialogs

### Chart Study Dialog

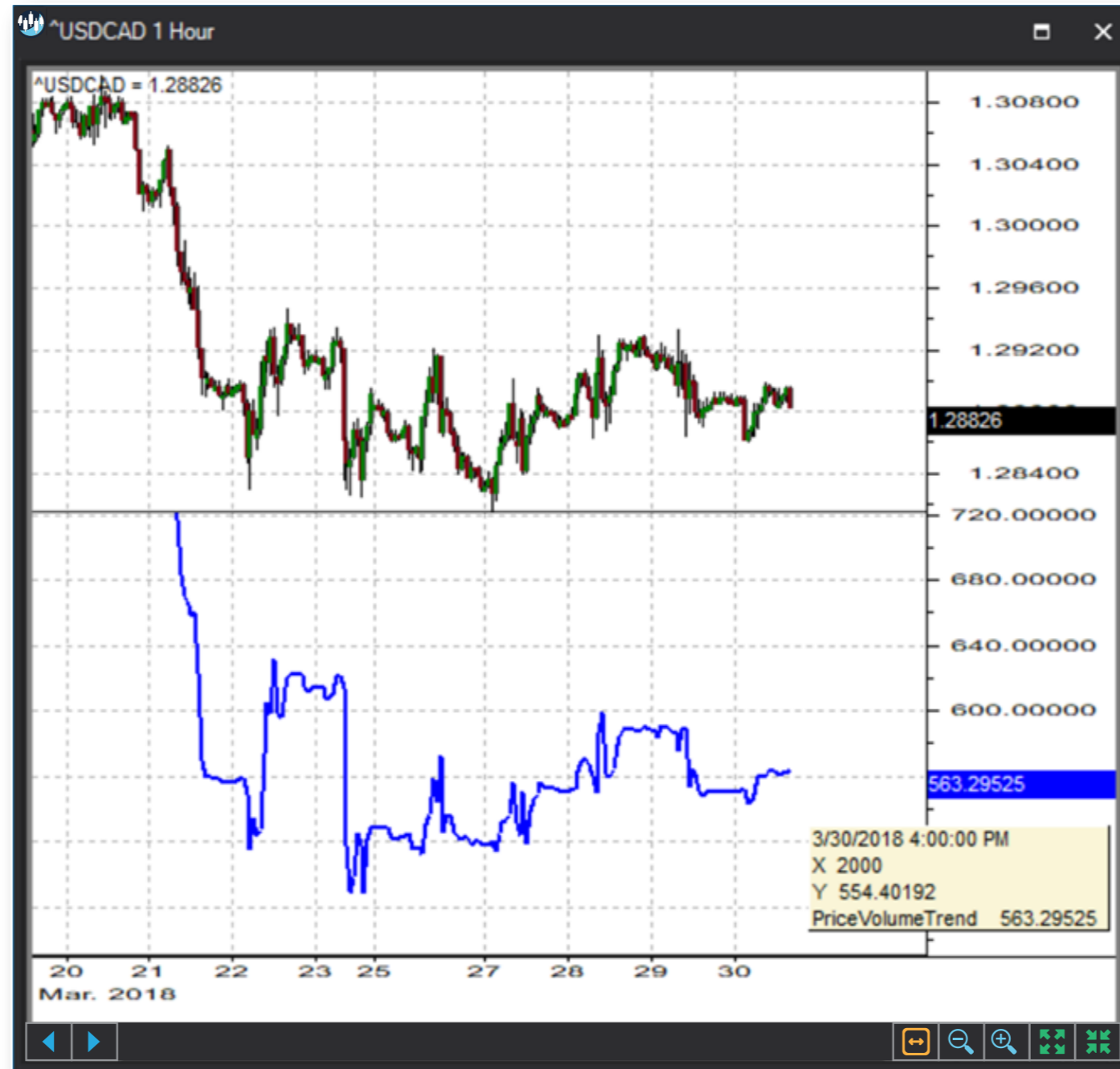


The dialog box is titled "Price Volume Trend" and contains the following settings:

- Indicator Parameters:**
  - Source: ^USDCAD.open
  - Symbol: ^USDCAD
- Series Configuration:**
  - Main: Line
  - Style: Solid
  - Width: 1
  - Color: Blue
  - Background: White
- Save as Default Setting
- Buttons: Add, Cancel



## Sample Chart With Study





## Quant Script™ Wizard Study Dialog

The image shows two overlapping dialog boxes in the S-Trader desktop platform. The 'Custom Study Wizard' dialog is on the left, and the 'Add Variable' dialog is on the right.

**Custom Study Wizard**

- Save To Group: Default
- Custom Study Name: [Empty text box]
- Password: [Empty text box]
- Result: Line, Solid, 2, [Color swatches]
- Reverse\_Result: Line, Solid, 2, [Color swatches]
- Add To New Panel:
- Buttons: Add New Variable, Edit Selected Variable
- Table with columns: Name, Description
- Buttons: OK, Cancel

**Add Variable**

- Name: [Empty text box]
- Description: [Empty text box]
- Source: CLOSE
- Variable List:
  - OnBalanceVolume
  - PositiveVolumeIndex
  - PriceVolumeTrend
  - PVI
  - PVT
  - TMF
  - TradeVolumeIndex
  - TVI
  - TwiggsMoneyFlow
  - VO
  - VOH
  - VolumeOscillator
  - VolumeOscillatorHistogram
  - VolumeOscillatorSignal
  - VolumeRateOfChange
  - VOS
  - VROC
  - WAD
- Buttons: Create Script Line, OK, Cancel



## Quant Script™ Study Dialog

**Custom Study Editor** [X]

Save To Group: 4\_OSCILLATORS\_MONEY\_FLC [A] 14.25

Custom Study Name: PVT

Password: [Empty]

Result: Line [Solid] 2 [Color: Teal]

Reverse\_Result: Line [Solid] 2 [Color: Purple]

Formula: `SET RESULT = PVT(OPEN)`  
`SET REVERSE_RESULT = PriceVolumeTrend(OPEN)` [Add To New Panel]

[OK] [Cancel]