



S-Trader





WAD | Williams Accumulation Distribution

Contents

Description	3
Formula	3
Parameters	3
Output value(s)	3
Plot	4
Quant Script™ Syntax	4
Dialogs	4
Chart Study Dialog	4
Sample Chart With Study	5
Quant Script™ Wizard Study Dialog	6
Quant Script™ Study Dialog	7



Description

The Williams Accumulation Distribution (WAD) indicator is a price change index that is designed to measure market pressures and more specifically to look for market divergence. The Williams AD indicator is useful in measuring market strength and market sentiment. Traders can use the Accumulation Distribution line to confirm trend direction and strength in addition to the typical technical analysis methods to monitor, such as trend lines, breakouts, support, and resistance.

Formula

Step 1: Calculate True Range High = TRH = Max (today high, yesterday closing price);

Step 2: Calculate True Range Low = TRL = Min (today low, yesterday closing price);

Step 3: Determine Price Move

- If Close Today > Close Yesterday, Price Move Today = Close Today – True Range Low
- If Close Today < Close Yesterday, Price Move Today = Close Today – True Range High
- If Close Today = Close Yesterday, Price Move Today = 0

Step 4: Determine Period WAD = Price Move * Volume

Step 5: Williams AD Today = WAD Today + Williams AD Yesterday

Parameters

none

n/a

Output value(s)

There is one output value resulting from the formula, the Williams Accumulation Distribution.



Plot

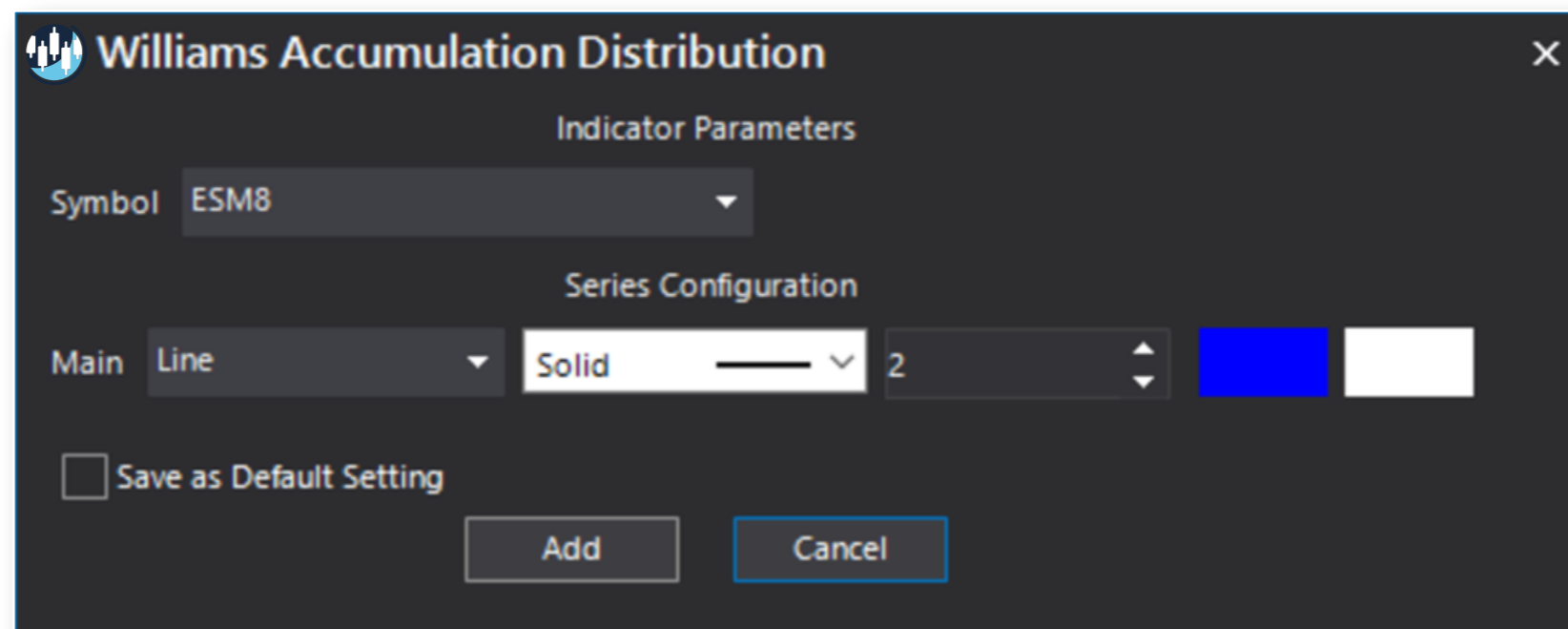
The plot is in a separate panel at the bottom.

Quant Script™ Syntax

Short Form	<i>WAD()</i>
Long Form	<i>WilliamsAccumulationDistribution()</i>

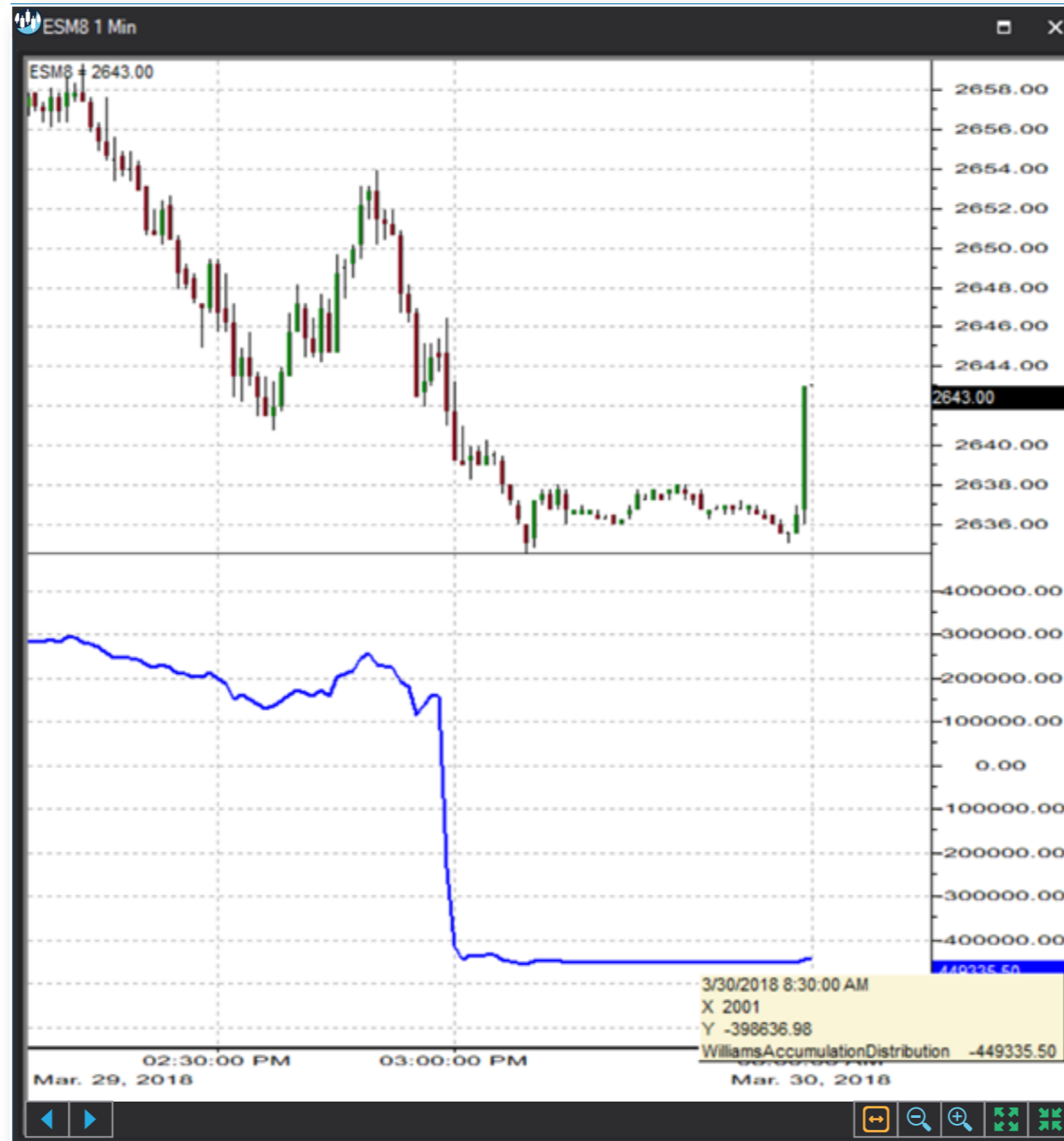
Dialogs

Chart Study Dialog





Sample Chart With Study





Quant Script™ Wizard Study Dialog

The image shows two overlapping dialog boxes in the S-Trader desktop platform. The 'Custom Study Wizard' dialog is on the left, and the 'Add Variable' dialog is on the right.

Custom Study Wizard

- Save To Group: Default
- Custom Study Name: [Empty text box]
- Password: [Empty text box]
- Result: Line, Solid, 2, [Color swatches]
- Reverse_Result: Line, Solid, 2, [Color swatches]
- Add To New Panel:
- Buttons: Add New Variable, Edit Selected Variable
- Table with columns: Name, Description
- Buttons: OK, Cancel

Add Variable

- Name: [Empty text box]
- Description: [Empty text box]
- Variable List:
 - VolumeOscillatorHistogram
 - VolumeOscillatorSignal
 - VolumeRateOfChange
 - VOS
 - VROC
 - WAD
 - WilliamsAccumulationDistribution
 - WilliamsVariableAccDist
 - WWAD
 - Oscillators - Price
 - Primitive - Extremes
 - Primitive - Logical Operators
 - Primitive - Summation
 - Primitive - Trend
 - Relative Strength
 - Statistics
 - SVA Functions
 - Trend Indicators
- Buttons: Create Script Line, OK, Cancel



Quant Script™ Study Dialog

