



**S-Trader**





# WVAD | Williams Variable Accumulation Distribution

## Contents

Description .....	3
Formula .....	3
Parameters .....	3
Output value(s) .....	3
Plot .....	3
Quant Script™ Syntax .....	4
Dialogs .....	4
Chart Study Dialog .....	4
Sample Chart With Study .....	5
Quant Script™ Wizard Study Dialog .....	6
Quant Script™ Study Dialog .....	7



## Description

The Williams Variable Accumulation Distribution (WVAD), developed by Larry Williams, is a volume-weighted price momentum indicator. It measures the buying and selling pressure by calculating the relationship between the number of points the market has moved from the open to close relative to the period's entire range. Short positions are taken for a negative moving average value, and Long positions for positive average values.

## Formula

Step 1: Calculate Period WVAD = Volume \* (Close – Open)/(High – Low)

Step 2: WVAD = moving average for n period and selected moving average type of Period WVAD

## Parameters

<b>Periods</b>	Any number of periods
<b>MA Type</b>	Any available moving average type

## Output value(s)

There is one output value resulting from the formula, the Williams Variable Accumulation Distribution.

## Plot

The plot is in a separate panel at the bottom.



## Quant Script™ Syntax

<b>Short Form</b>	<i>WVAD</i> (Periods, MA Type)
<b>Long Form</b>	<i>WilliamsVariableAccumulationDistribution</i> (Periods, MA Type)

## Dialogs

### Chart Study Dialog

**Williams Variable Acc Dist** [X]

Indicator Parameters

Period: 10

MaType: Exponential

Symbol: ESM8

Series Configuration

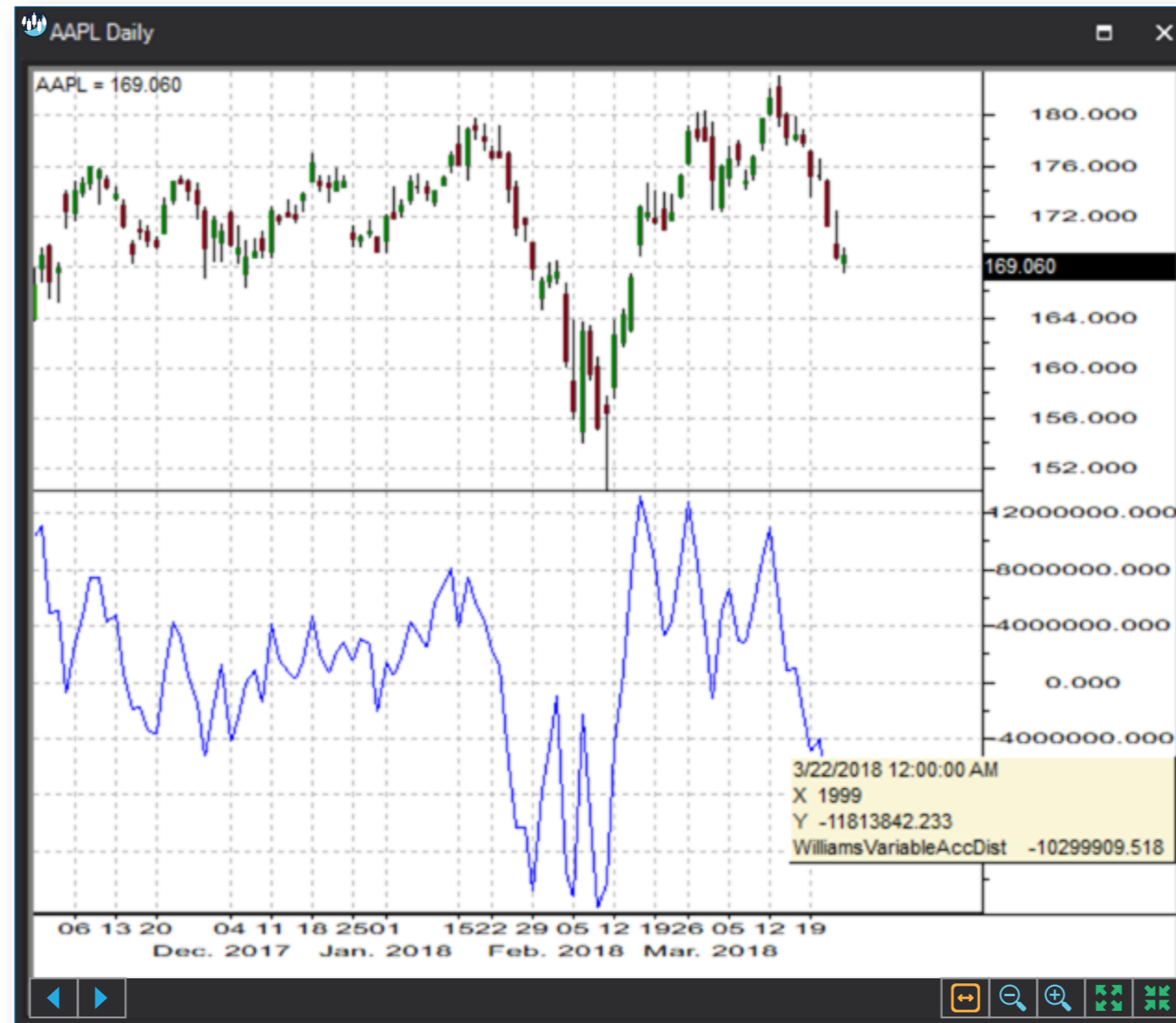
Main: Line | Solid | 1 | [Color Selection]

Save as Default Setting

[Add] [Cancel]



## Sample Chart With Study





## Quant Script™ Wizard Study Dialog

The image shows two overlapping dialog boxes in the S-Trader desktop platform. The 'Custom Study Wizard' dialog is on the left, and the 'Add Variable' dialog is on the right.

**Custom Study Wizard Dialog:**

- Save To Group: Default
- Custom Study Name: [Empty text field]
- Password: [Empty text field]
- Result: Line, Solid, 2, [Color swatches]
- Reverse\_Result: Line, Solid, 2, [Color swatches]
- Buttons: Add To New Panel (checked), Add New Variable, Edit Selected Variable
- Table with columns: Name, Description
- Buttons: OK, Cancel

**Add Variable Dialog:**

- Name: [Empty text field]
- Description: [Empty text area]
- Variable List: TVI, TwiggMoneyFlow, VO, VOH, VolumeOscillator, VolumeOscillatorHistogram, VolumeOscillatorSignal, VolumeRateOfChange, VOS, VROC, WAD, WilliamsAccumulationDistribution, WilliamsVariableAccDist, WWAD, Oscillators - Price, Primitive - Extremes, Primitive - Logical Operators
- Period: 10
- MaType: Exponential
- Button: Create Script Line
- Preview: WilliamsVariableAccDist(10, Exponential)
- Buttons: OK, Cancel



## Quant Script™ Study Dialog

**Custom Study Editor** [Close]

Save To Group: 4\_OSCILLATORS\_MONEY\_FLC [Dropdown] A 14.25 [Dropdown]

Custom Study Name: WVAD [Text]

Password: [Text]

Result: Line [Dropdown] Solid [Dropdown] 2 [Spinner] [Color Picker]

Reverse\_Result: Line [Dropdown] Solid [Dropdown] 2 [Spinner] [Color Picker]

Formula Add To New Panel

```
SET RESULT = WVAD(10, EXPONENTIAL)
SET REVERSE_RESULT = WilliamsVariableAccDist(10, EXPONENTIAL)
```

[OK] [Cancel]