



S-Trader



2673

14.86

12.28

8.81

12.07

2.77

10.97

21.72

12.59

6.98

3.15

5.28

2.11

3.09

7.87

16.84

13.03

12.24

15.97

1.62

0.77

1.95

8.45

4.52

1.11

1.51

2.58

1.53

+0.52%

+0.18%

+0.18%

+0.18%

+0.46%

+0.46%

12734

2918

28025

9487

10383

18775

791

2000

1749

2673

16

5

6

9

16

38

16

38

16



HML | High Minus Low

Contents

Description	3
Formula	3
Parameters	3
Output value(s)	3
Plot	3
Quant Script™ Syntax	3
Dialogs	4
Chart Study Dialog	4
Sample Chart With Study	5
Quant Script™ Wizard Study Dialog	6
Quant Script™ Study Dialog	7



Description

This indicator represents the “per period” range – or difference between the high and the low.

Formula

HML = High - Low

Parameters

none

Output value(s)

There is one output value resulting from the formula, the High Minus Low.

Plot

The plot is in a separate panel at the bottom.

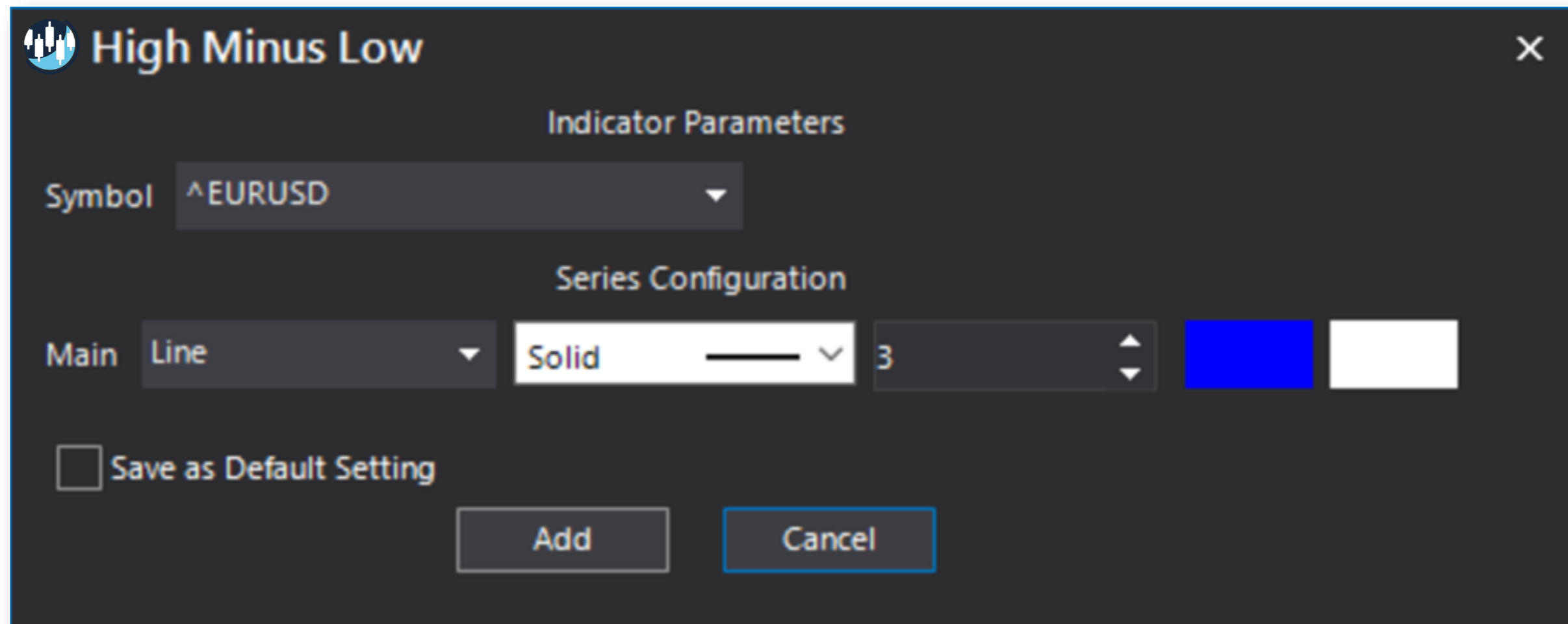
Quant Script™ Syntax

Short Form	<i>HML()</i>
Long Form	<i>HighMinusLow()</i>



Dialogs

Chart Study Dialog



The image shows a dialog box titled "High Minus Low" with a close button (X) in the top right corner. The dialog is divided into two sections: "Indicator Parameters" and "Series Configuration".

Indicator Parameters:

- Symbol: ^EURUSD

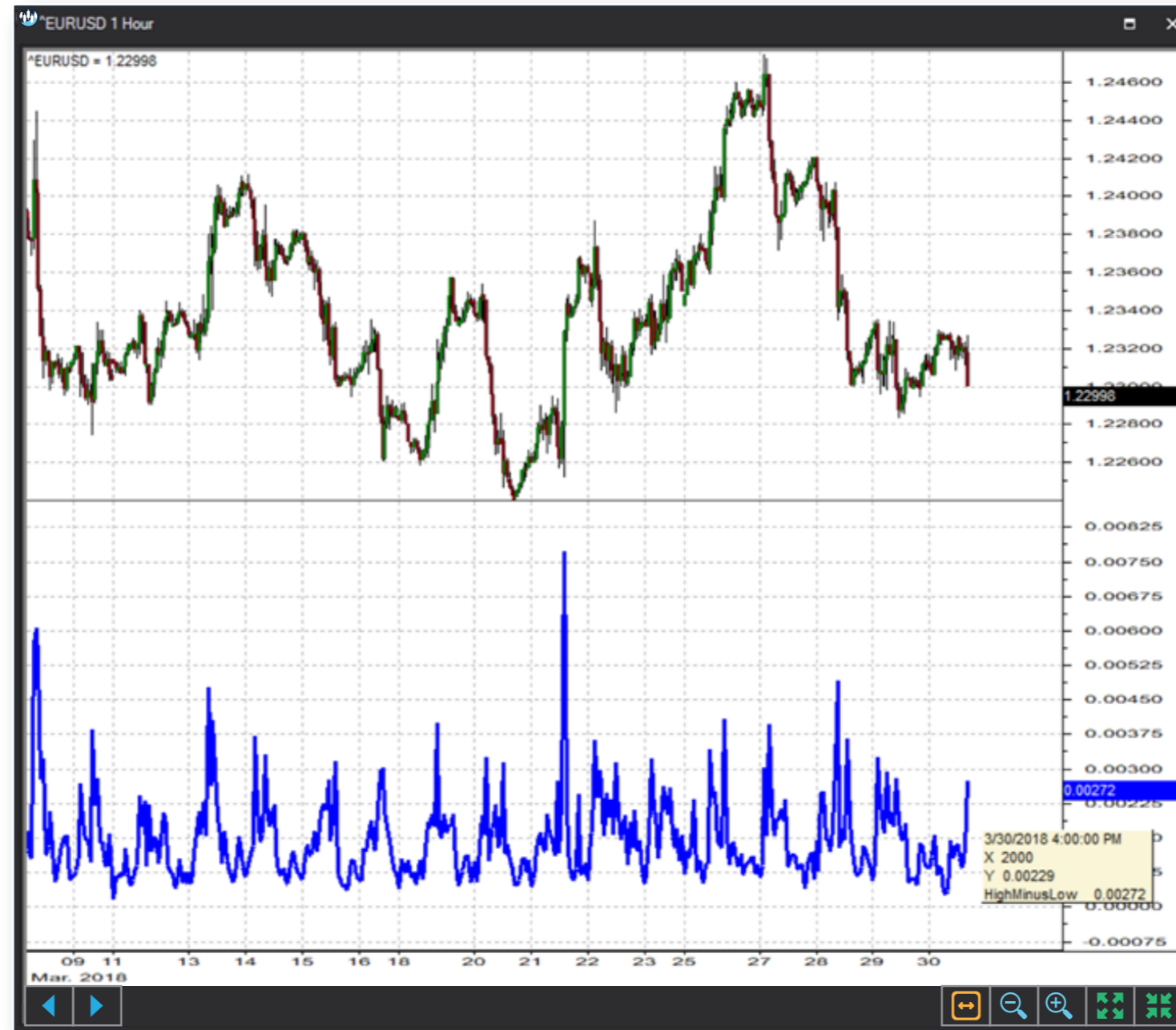
Series Configuration:

- Main: Line
- Style: Solid
- Width: 3
- Color: Blue
- Background: White

At the bottom left, there is a checkbox labeled "Save as Default Setting" which is currently unchecked. At the bottom center, there are two buttons: "Add" and "Cancel".



Sample Chart With Study





Quant Script™ Wizard Study Dialog

The image shows two overlapping dialog boxes from the S-Trader platform. The 'Custom Study Wizard' dialog is on the left, and the 'Add Variable' dialog is on the right.

Custom Study Wizard

- Save To Group: Default
- Custom Study Name: [Empty text box]
- Password: [Empty text box]
- Result: Line, Solid, 2, [Color swatches]
- Reverse_Result: Line, Solid, 2, [Color swatches]
- Buttons: Add To New Panel (checked), Add New Variable, Edit Selected Variable
- Table:

Name	Description
------	-------------
- Buttons: OK, Cancel

Add Variable

- Name: [Empty text box]
- Description: [Empty text box]
- Tree view:
 - Primitive - Summation
 - Primitive - Trend
 - Relative Strength
 - Statistics
 - SVA Functions
 - Trend Indicators
 - Volatility
 - ATR
 - AverageTrueRange
 - ChaikinVolatility
 - CV
 - EFT
 - EFTS
 - EhlerFisherTransform
 - EhlerFisherTransformSignal
 - HighMinusLow
 - HistoricalVolatilityIndex
 - HML

- Text area: HighMinusLow()
- Buttons: Create Script Line, OK, Cancel



Quant Script™ Study Dialog

Custom Study Editor [X]

Save To Group: 6_VOLATILITY [A] 15.25

Custom Study Name: HML

Password: []

Result: Line [Solid] 2 [Color: Teal]

Reverse_Result: Line [Solid] 2 [Color: Purple]

Formula: `SET RESULT = HML()
SET REVERSE_RESULT = HighMinusLow()` [Add To New Panel] []

[OK] [Cancel]