



S-Trader





SR | Stability Ratio Function

Contents

Description	3
Formula	3
Parameters	3
Output value(s)	3
Plot	3
Quant Script™ Syntax	4
Dialogs	4
Chart Study Dialog	4
Sample Chart With Study	5
Quant Script™ Wizard Study Dialog	6
Quant Script™ Study Dialog	7



Description

The Stability Ratio was first detailed by Dr. Verne Atrill in his manuscript, *How All Economies Work*, as the Solvency Ratio. The ratio measures what is currently available to meet the ongoing debt requirements of the company, and allow the company to maintain its current state.

To learn more about Structural Valuation Analysis, [visit the website of Strategic Analysis Corporation](#).

Formula

Stability Ratio = Operational Assets / Operational Liabilities

Where

Operational Assets = Total Assets + Accumulated Depreciation – Net Plant and Equipment

Operational Liabilities = Total Liabilities - Networth

Parameters

None

n/a

Output value(s)

There is one output value, the SR function.

Plot

The plot is in a separate panel at the bottom.



Quant Script™ Syntax

Short Form	<i>n/a</i>
Long Form	<i>SR_function()</i>

Dialogs

Chart Study Dialog

Bollinger Bands Indicator Parameters

Source: ^EURUSD.close

Periods: 21

Standard Dev: 2.00000

MA Type: Exponential

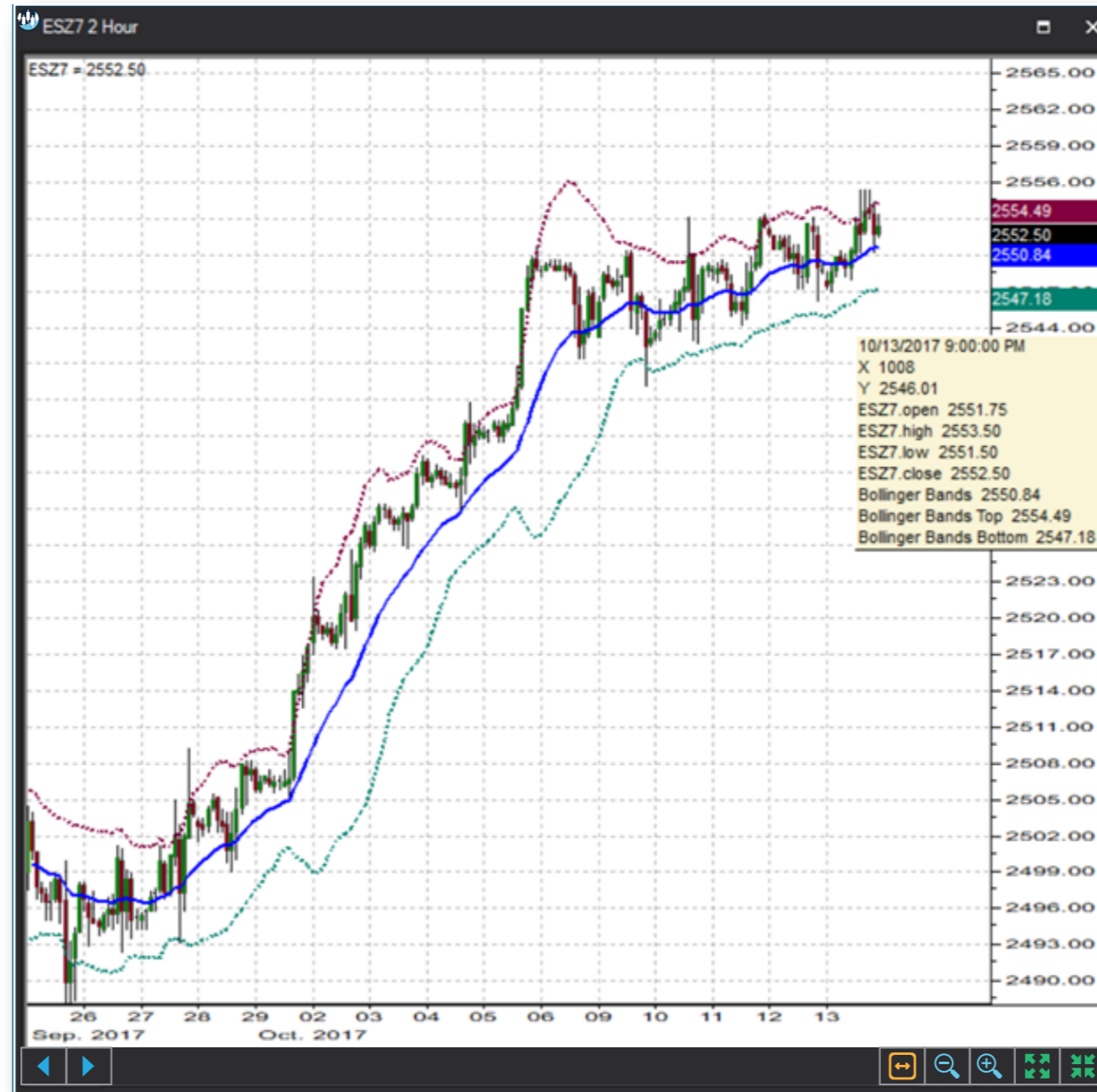
Series Configuration

Series	Type	Style	Width	Color	Fill
Main	Line	Solid	2	Blue	White
Top	Line	Dash	2	Red	White
Bottom	Line	Dash	2	Green	White

Buttons: Add, Cancel

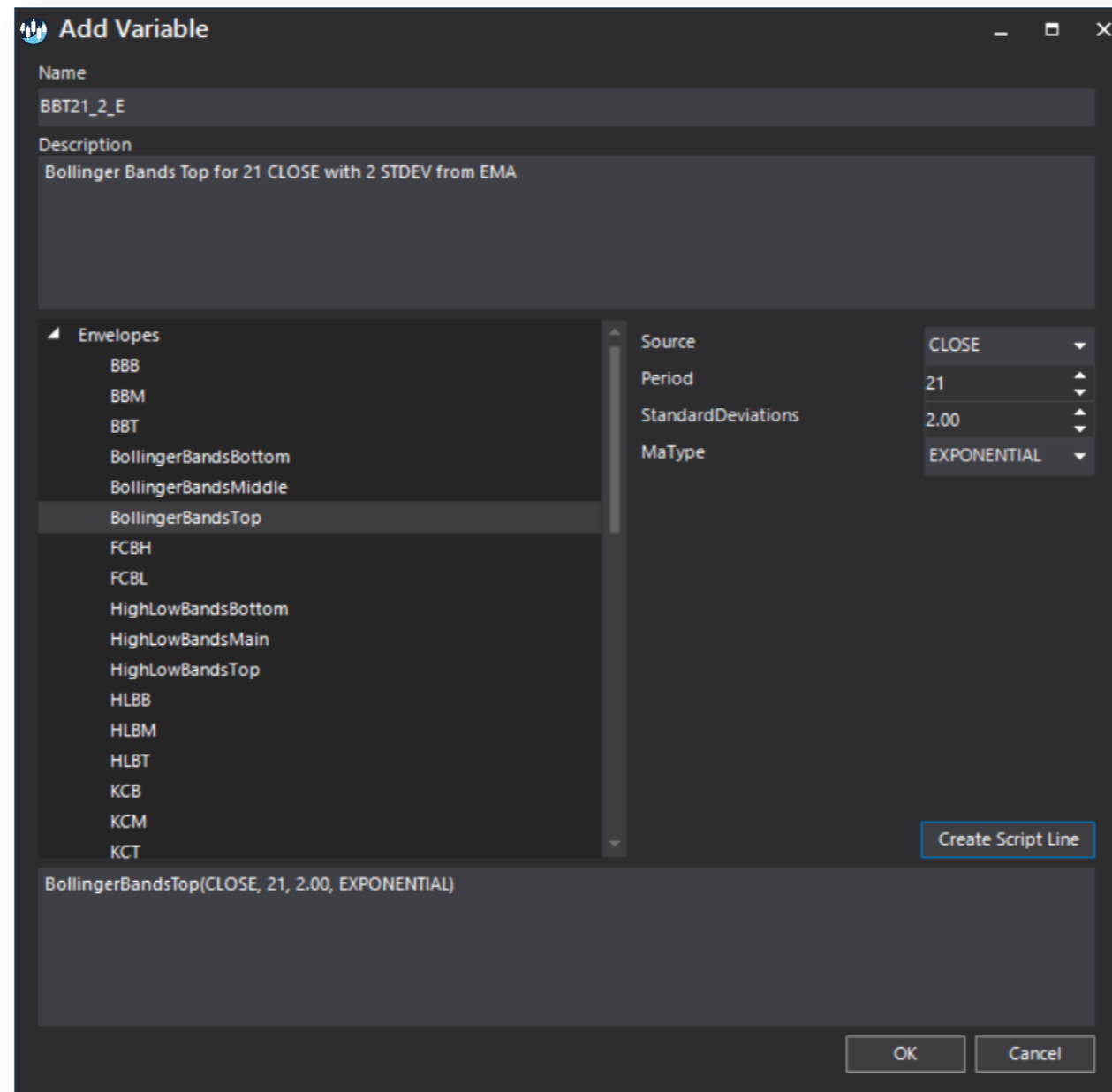


Sample Chart With Study





Quant Script™ Wizard Study Dialog





Quant Script™ Study Dialog

