



S-Trader Desktop Installation

Contents

| | |
|---|----|
| STEP 1 – Download installer | 2 |
| STEP 2 – Install initial package | 3 |
| STEP 3 – Download the latest S-Trader version | 7 |
| STEP 4 – Activation | 10 |
| Licensing levels | 12 |
| Versions & updates | 13 |
| Logging in to the S-Trader | 15 |



STEP 1 – Download installer

Download the S-Trader installer at http://www.s-trader.com/?page_id=7229

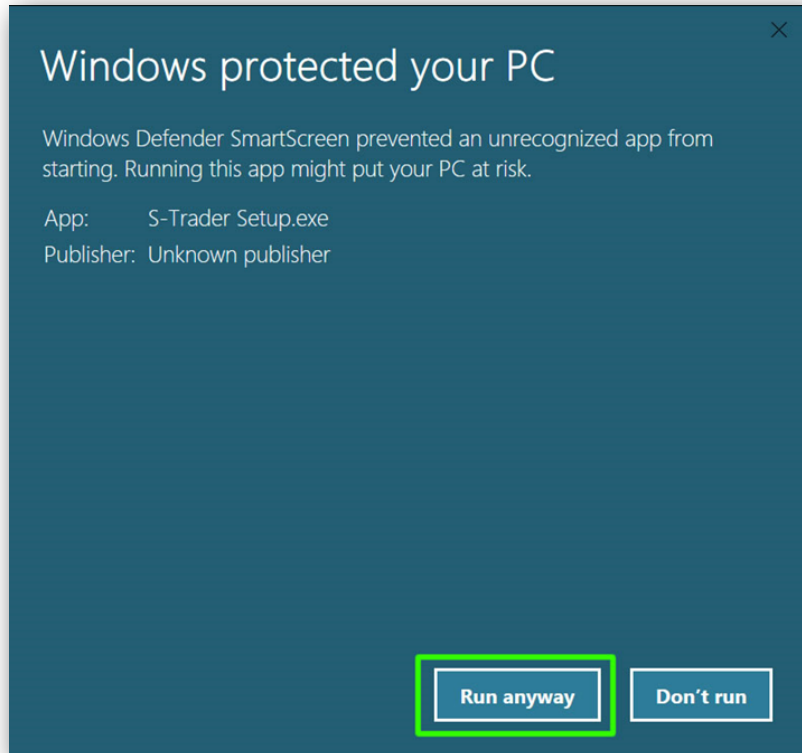




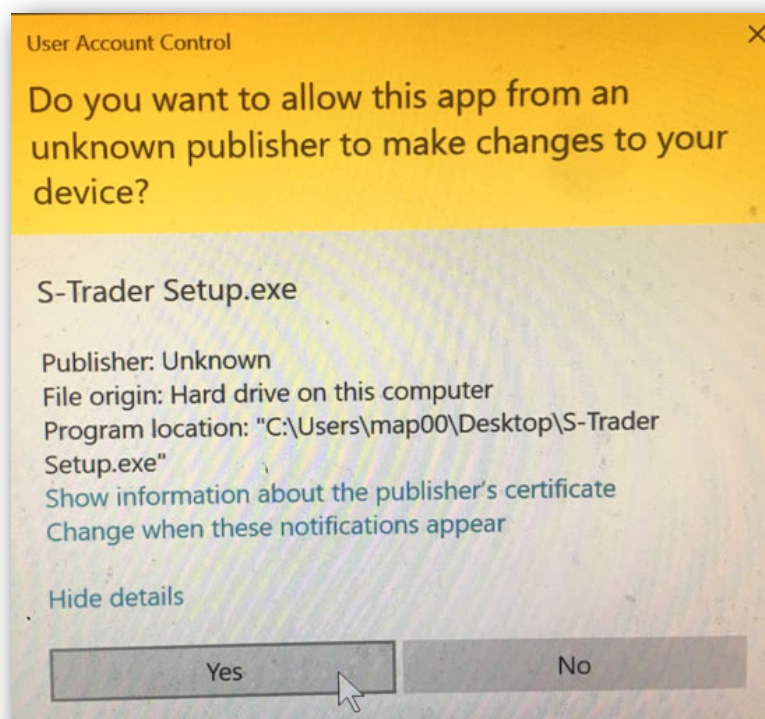
STEP 2 – Install initial package

Once the package is downloaded, you can proceed with the initial package installation:

A. Start and confirm the S-Trader installation

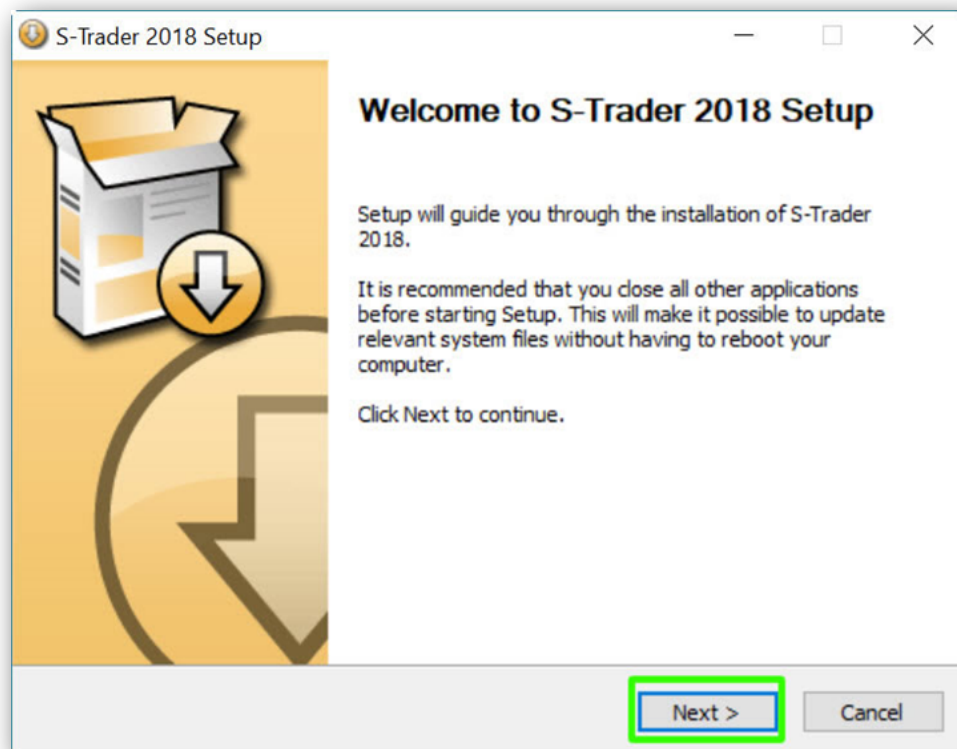


B. Allow changes to your device

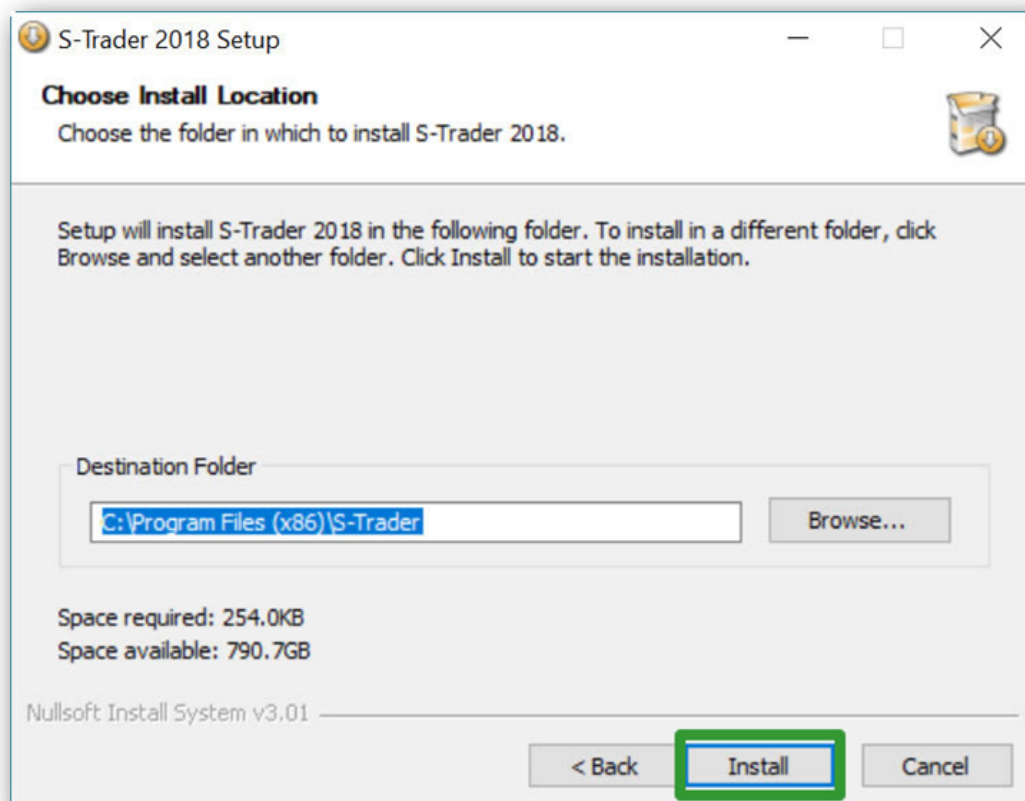




C. Proceed to S-Trader setup

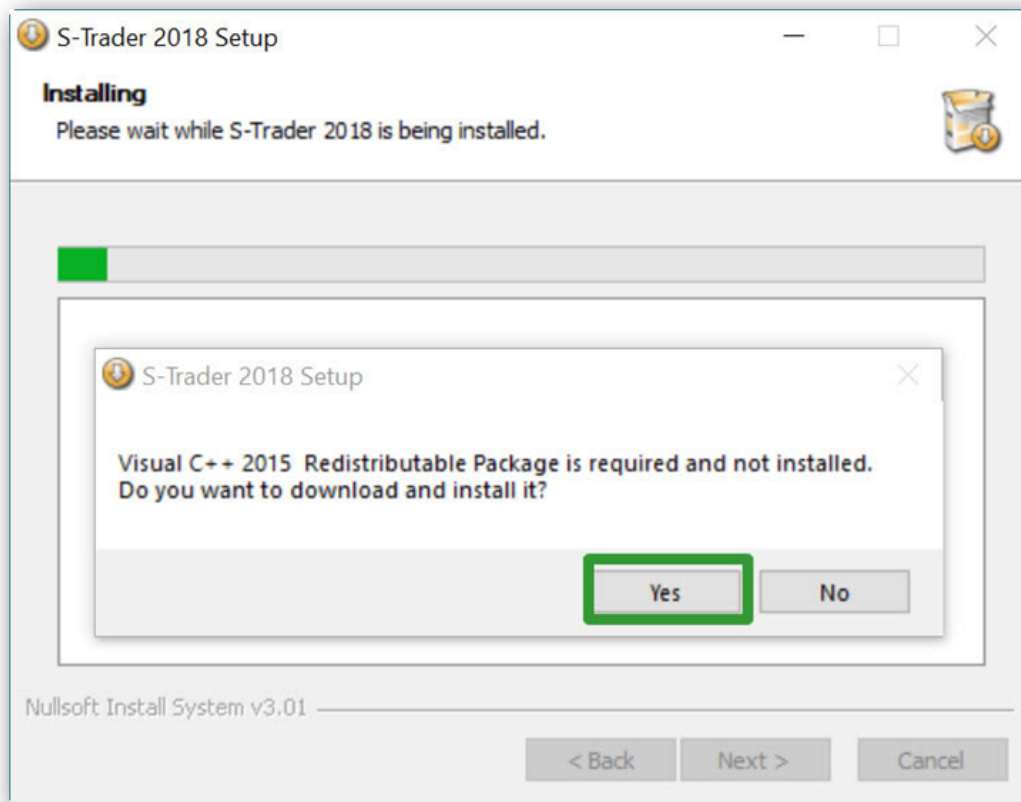


D. Set S-Trader destination folder

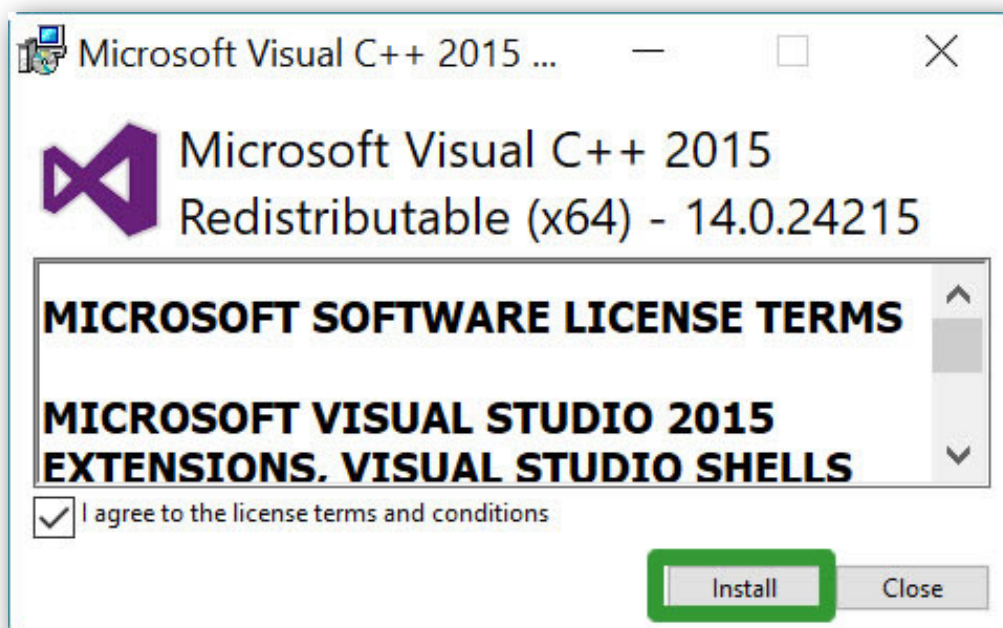




E. Confirm Microsoft Visual C++ installation

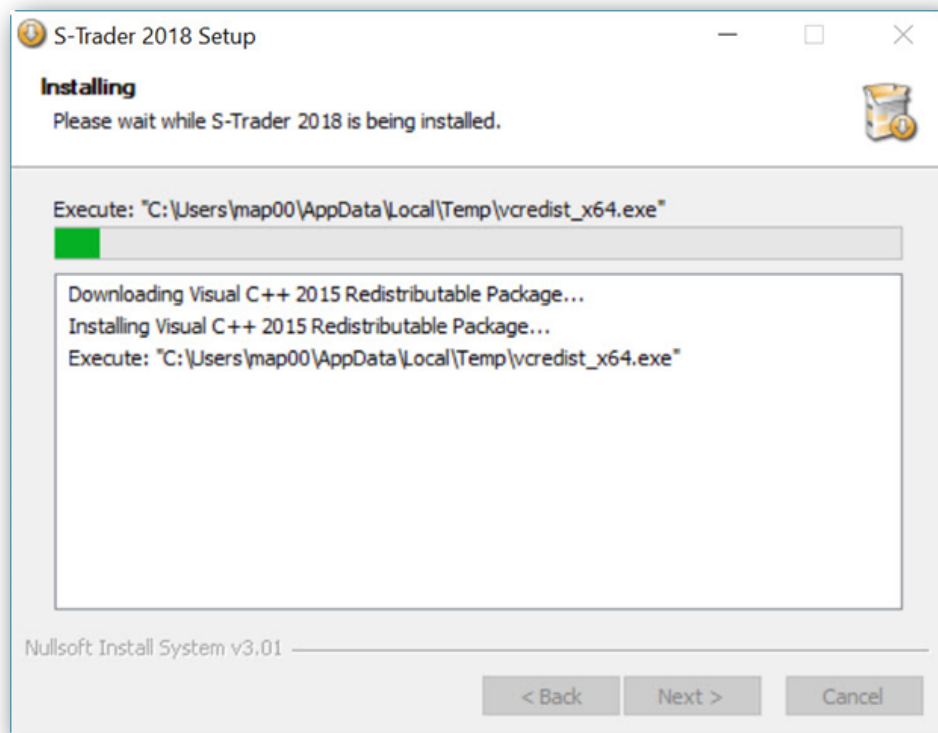


F. Further confirm Microsoft Visual C++ installation

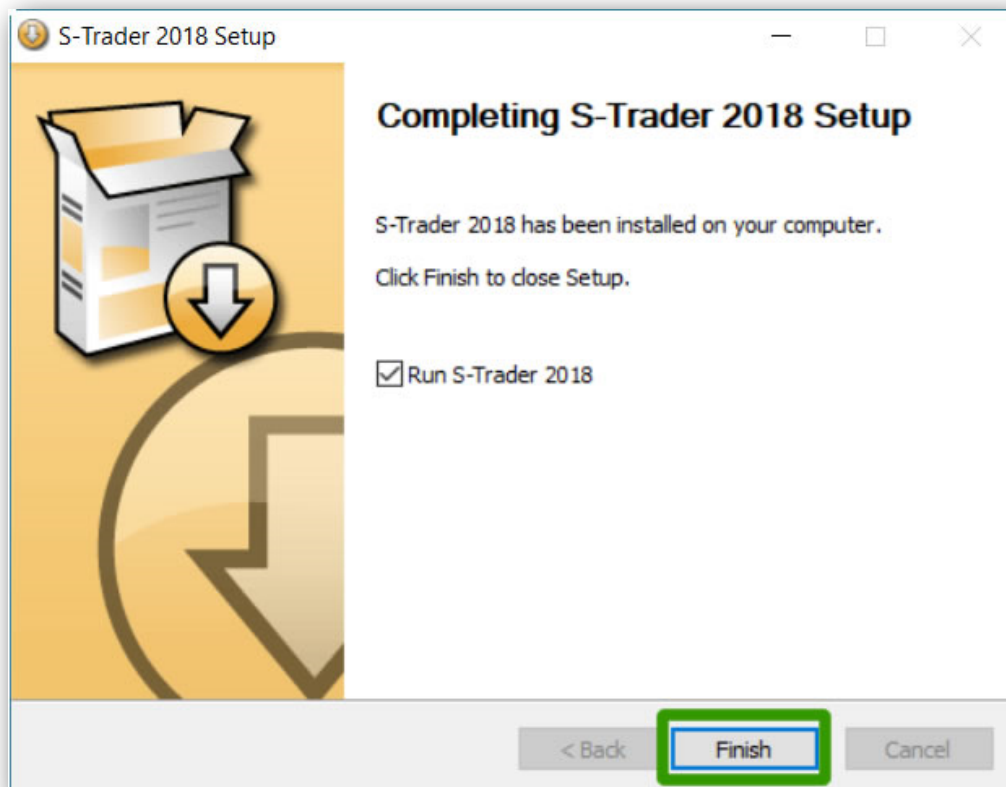




G. Await Microsoft Visual C++ installation to complete



H. Complete initial S-Trader installation



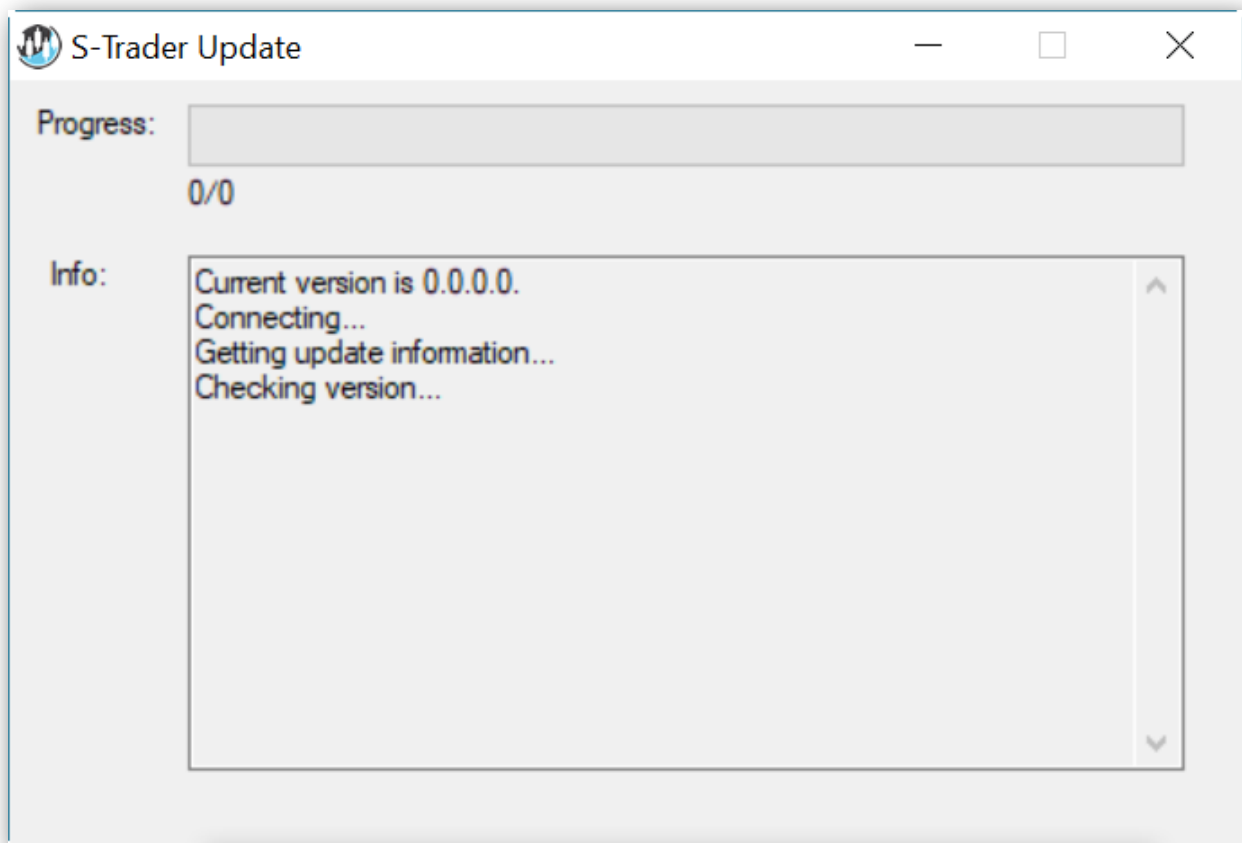


STEP 3 – Download the latest S-Trader version

The S-Trader Updater is an integral part of the initial installation package and helps you retrieve the most recent S-Trader release that is verified to be entirely stable and secure.

A. Run the S-Trader updater

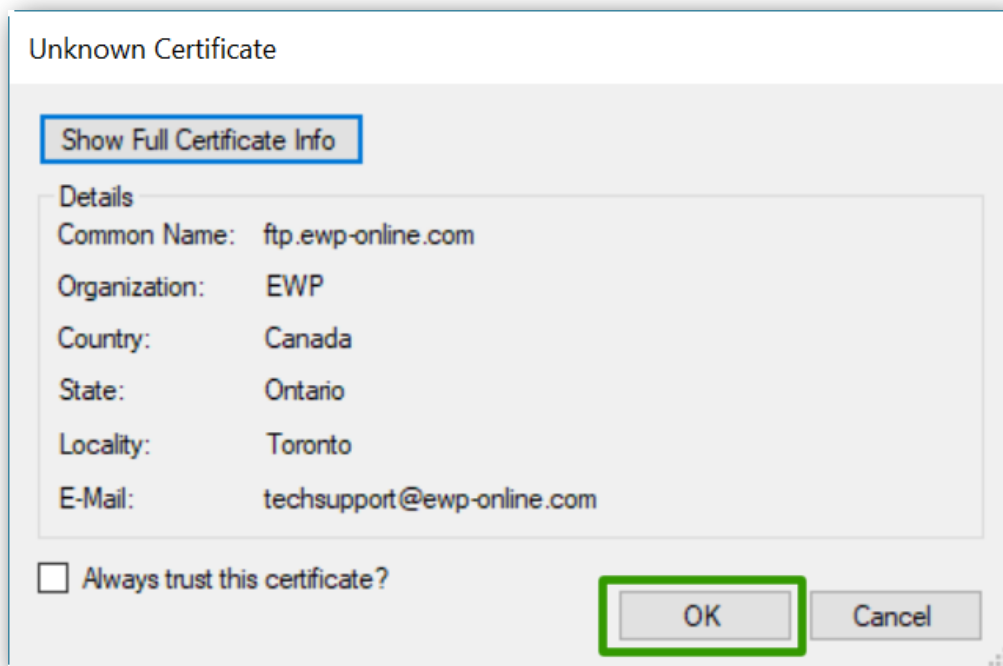
Upon starting off the S-Trader Updater, you will get the following dialogs:



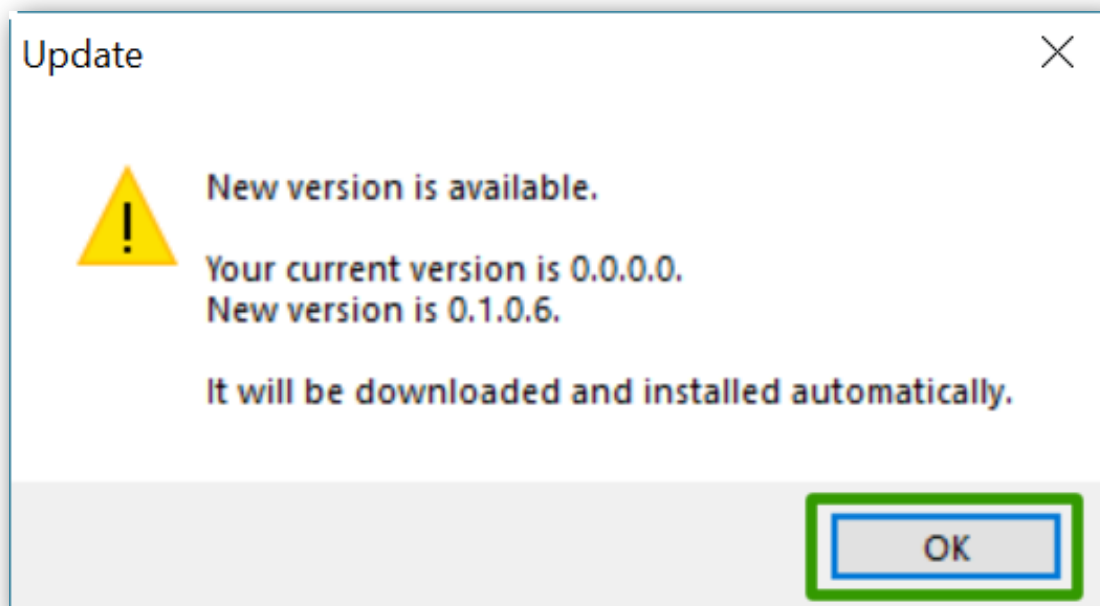


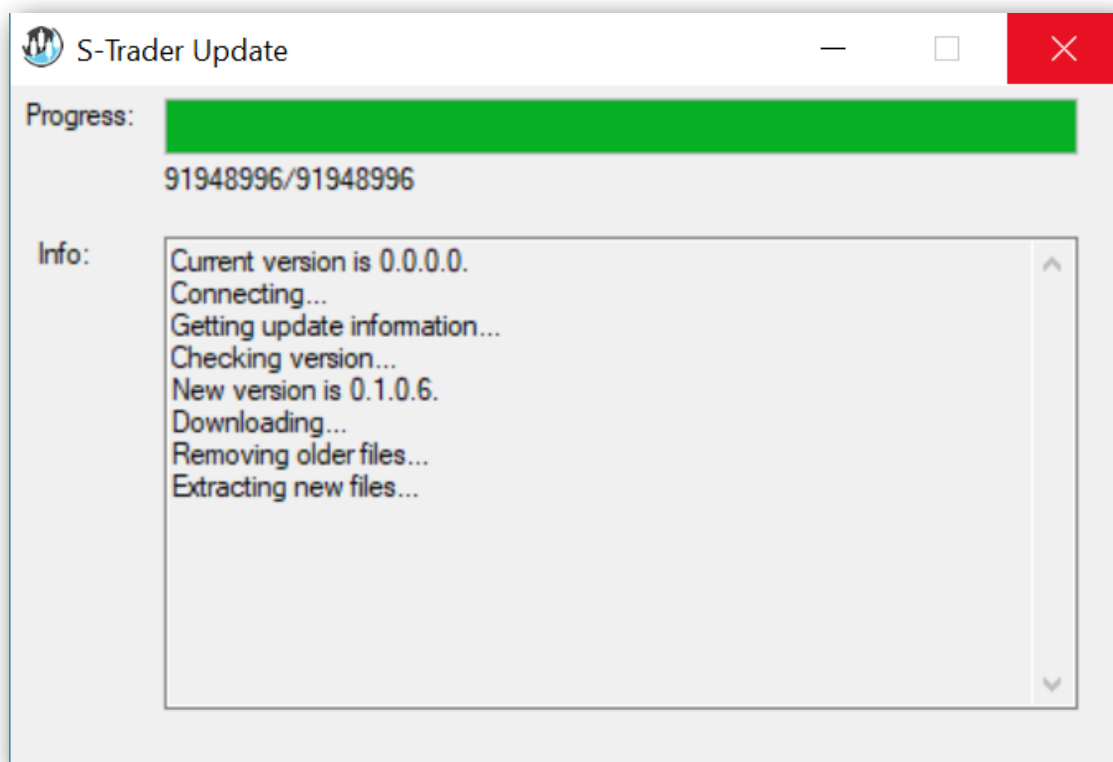
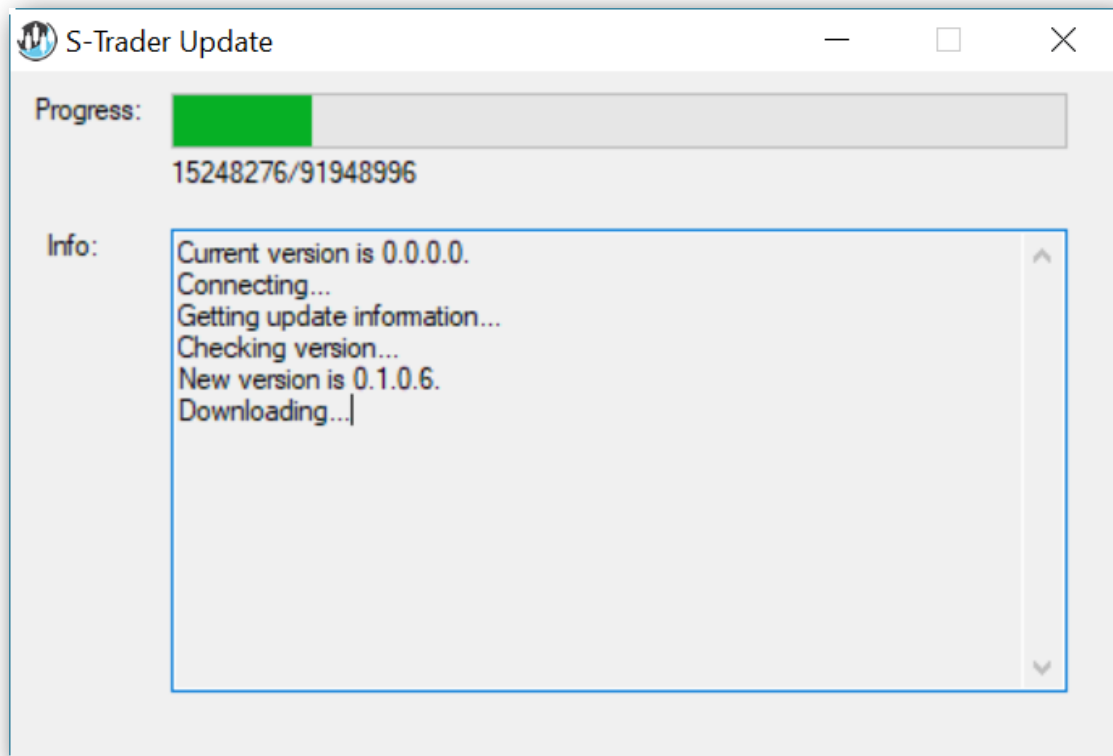
B. Review the latest available S-Trader version

Upon pressing "OK", the app will compare the existing version of your app with the latest available version of the app. In the case of a fresh installation the existing version of the S-Trader is 0.0.0.0:



C. Confirm the installation of the latest available S-Trader version







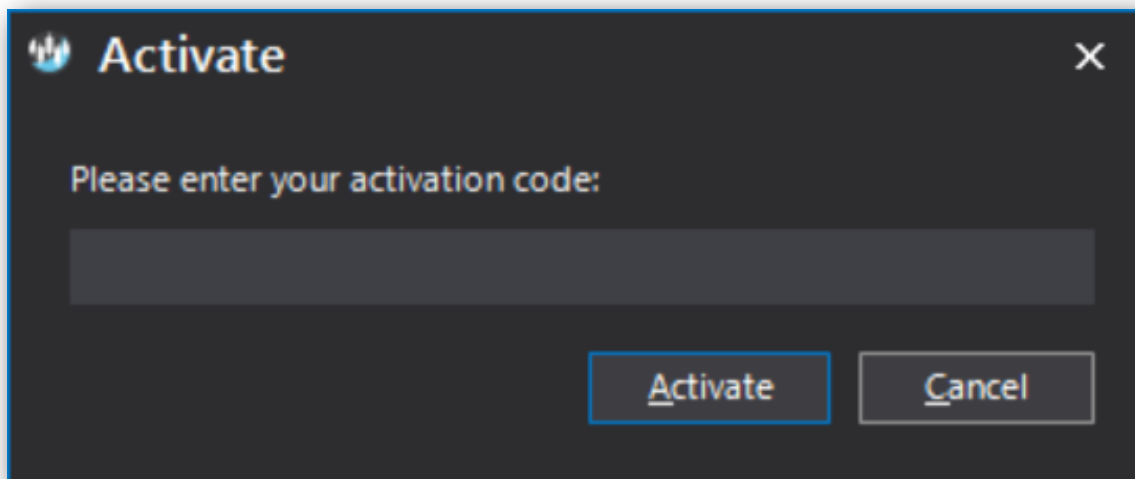
STEP 4 – Activation

The S-Trader will request an activation key after the application has been started for the first time. This activation key is provided to you by S-Trader.com at the time you purchased your license. The key consists of 46 alphanumeric characters and is case sensitive.

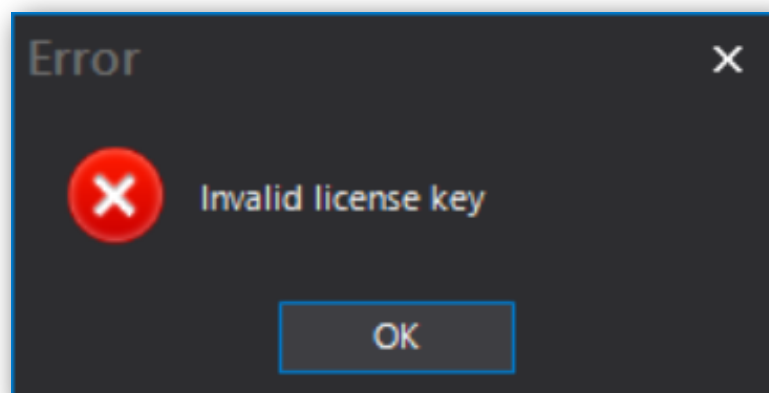
Please ensure that your computer has Internet connectivity, then enter your activation code and click the Activate button to continue.

Activations are monitored and unauthorized use is promptly prosecuted.

A. Insert Activation Code

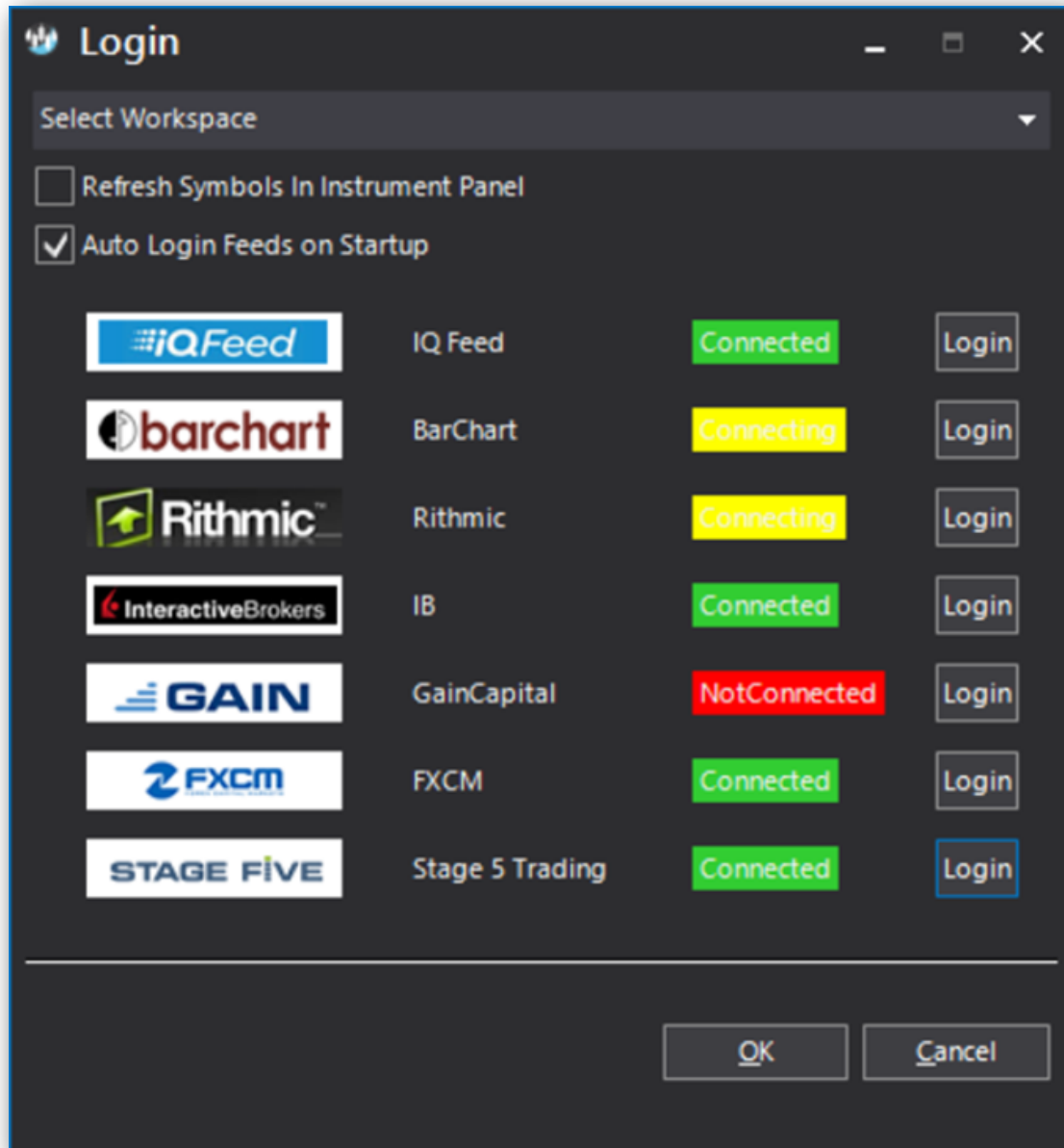


An error message will display if the activation is unsuccessful.





The LogIn dialog will pop up if the activation is successful.





Licensing levels

All S-Trader licenses enable the user to access all available S-Trader features, components and modules. However, there are three (3) different licensing levels, each pertaining to a specific level of data connectivity:

- Core – usable with only historical and local data;
- Advanced – usable with historical and local data as well as one single live data connector at a time and a compatible order routing API, if applicable;
- Ultimate - usable with historical and local data as well as multiple simultaneous live data connectors at any time and cross-feed order routing capability.

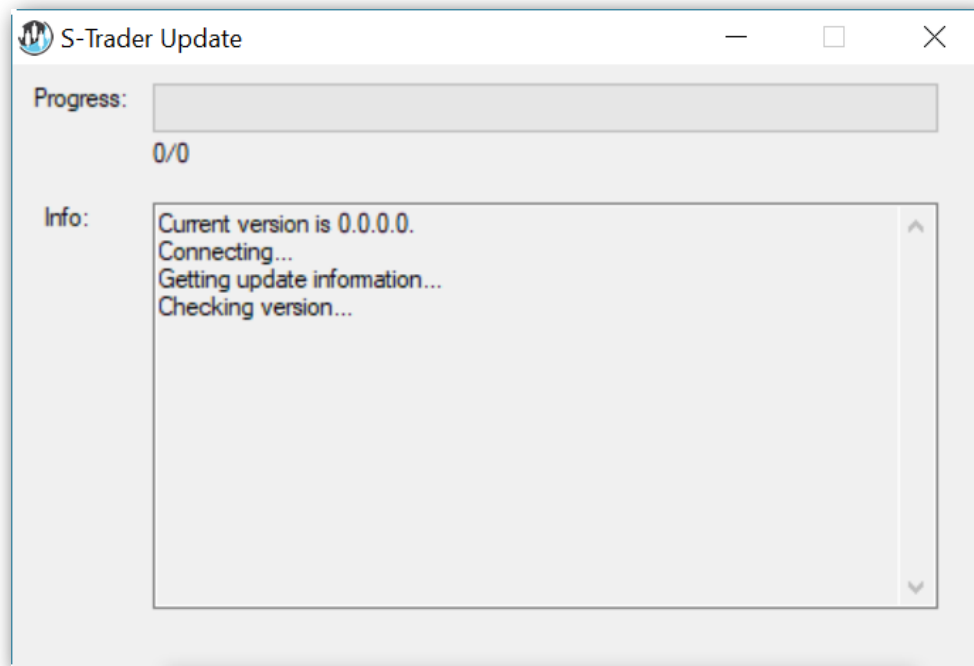
Depending on which Vendor you purchased your license from, you may be getting different S-Trader editions but the licensing levels will always stay the same.



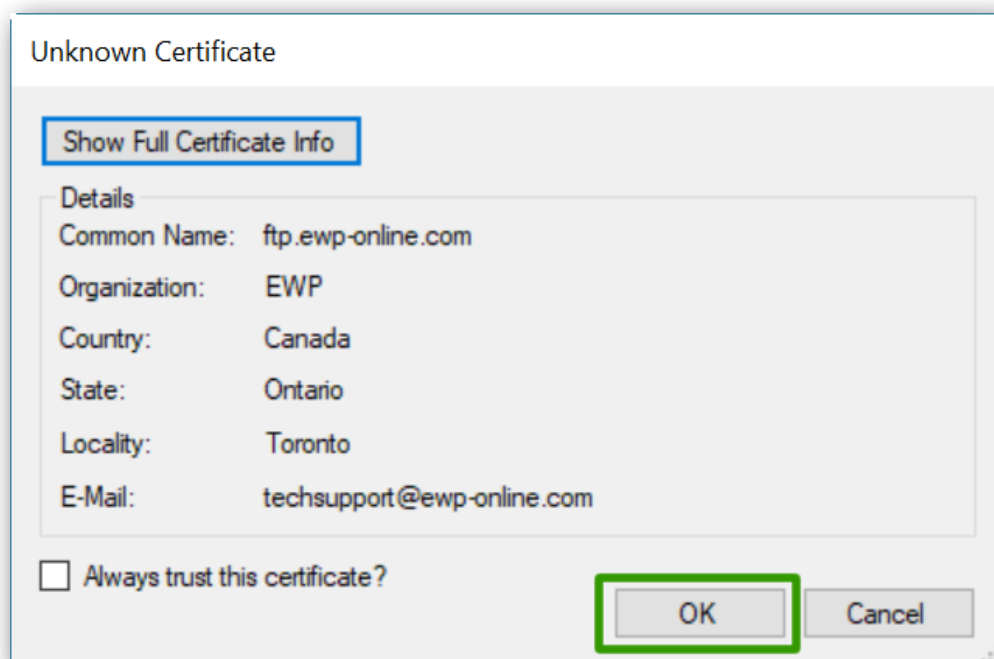
Versions & updates

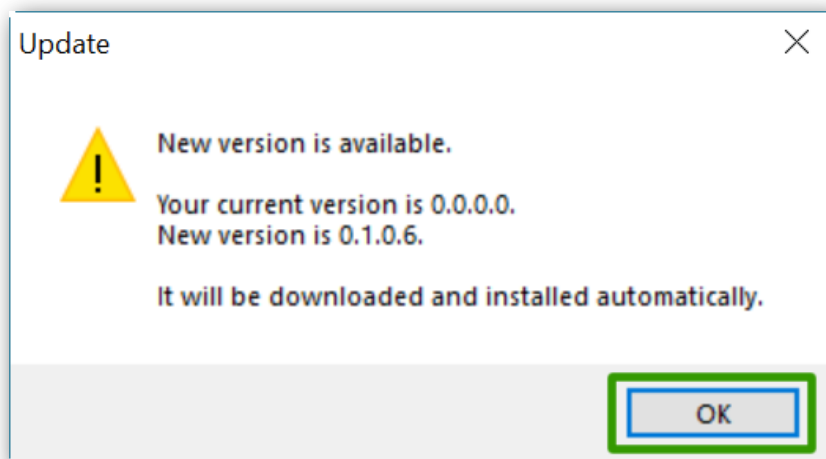
The S-Trader has an automatic download and self-install feature so users can easily update to the most recent version:

A. Check for an update

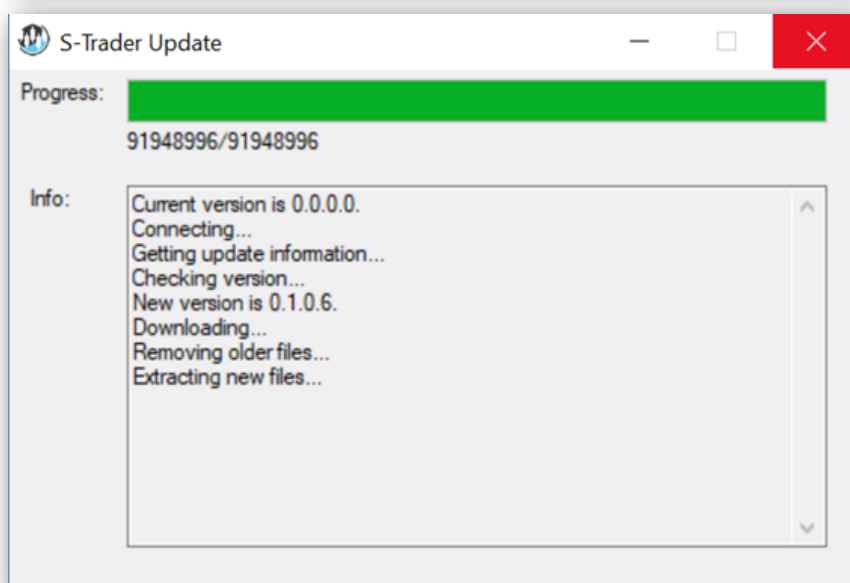
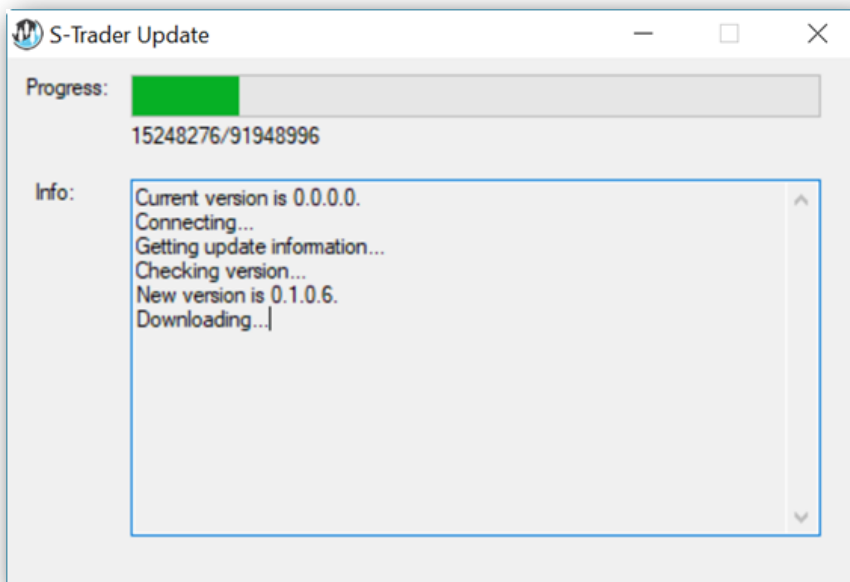


B. Approve the update





C. Download and auto-install the update

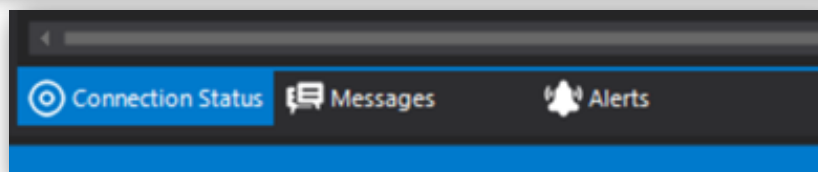
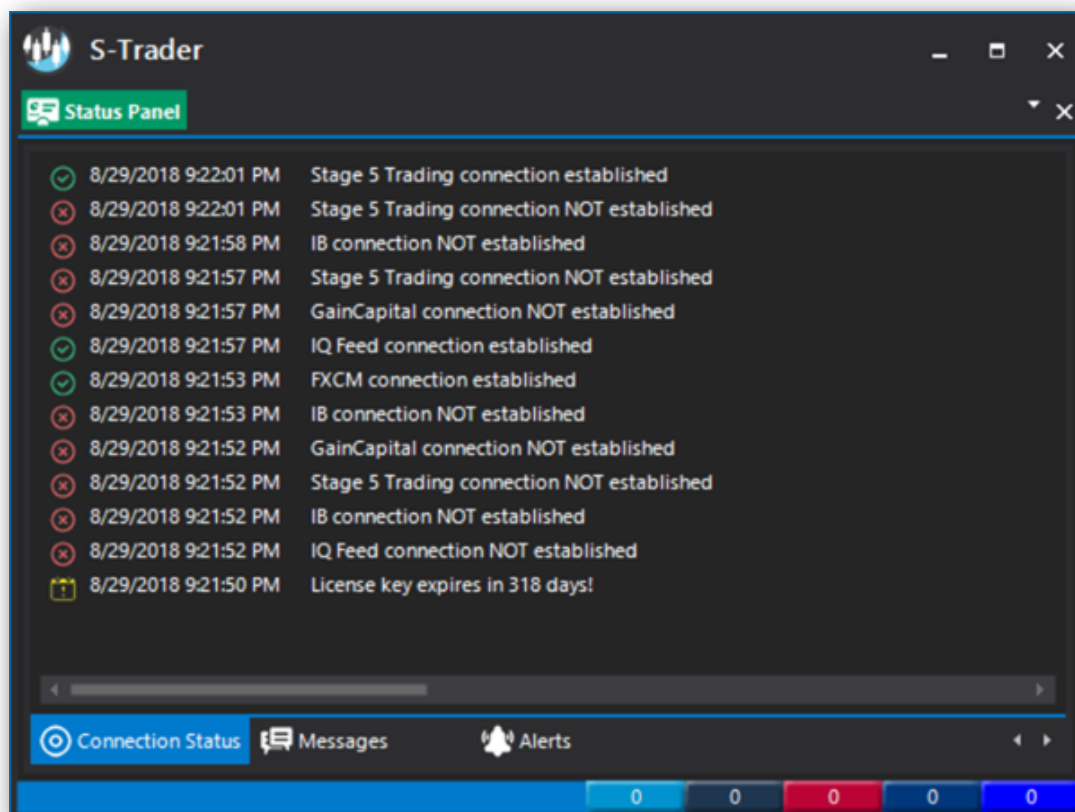




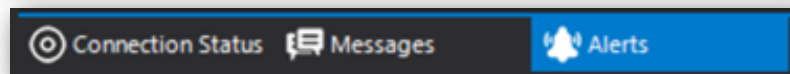
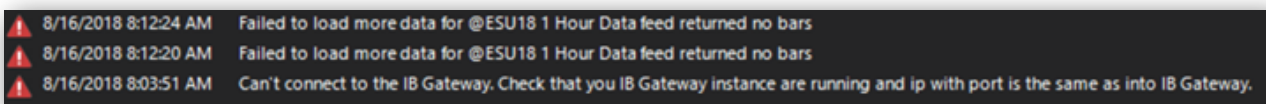
Logging in to the S-Trader

The login dialog changes from one licensing level to the other. In this section you will find detailed explanations as to what happens under each license type.

- The “Connection Status” section of the Status Panel will document all live data connections established during the login process:



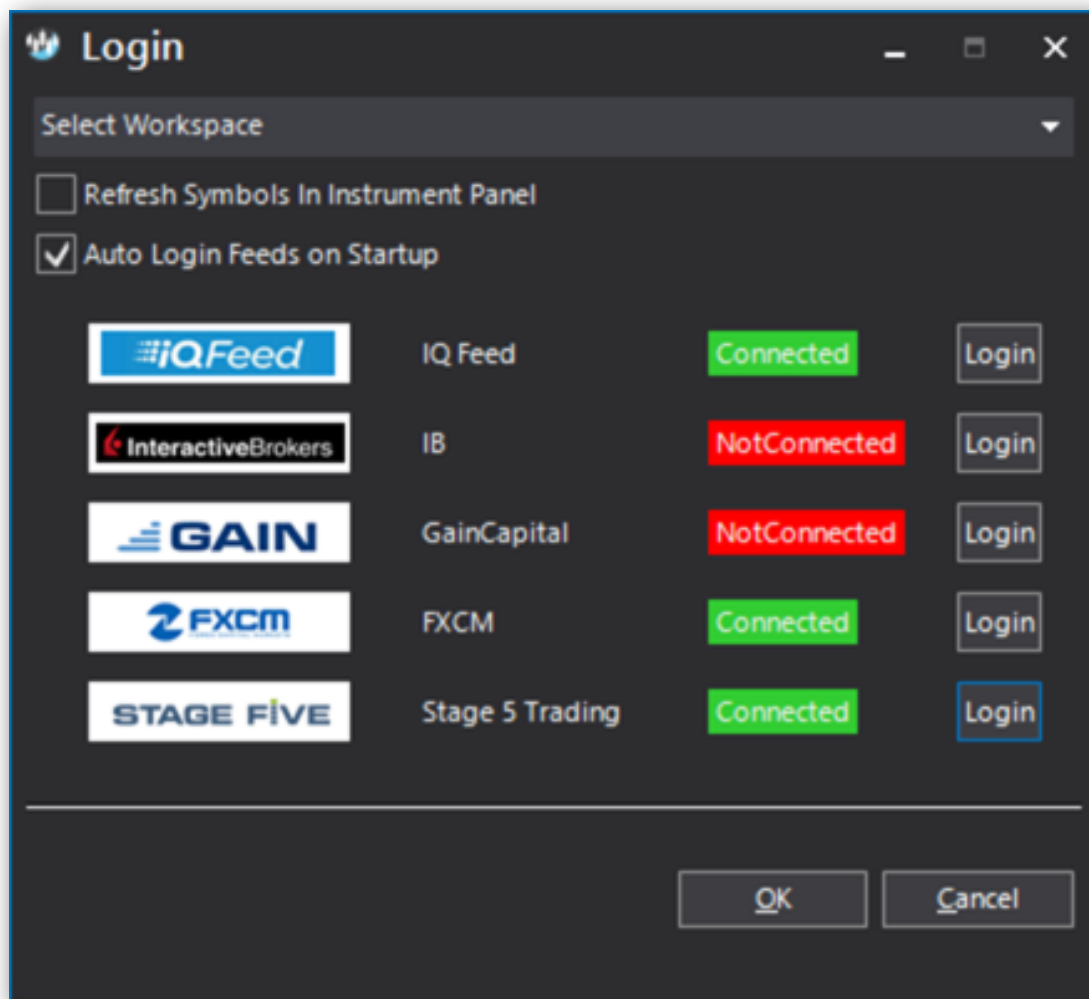
- The “Alerts” section will also document the problems encountered, if any:





Ultimate License

The login screen will display after the application loads. Multiple data connectors can be managed in one place.



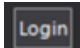


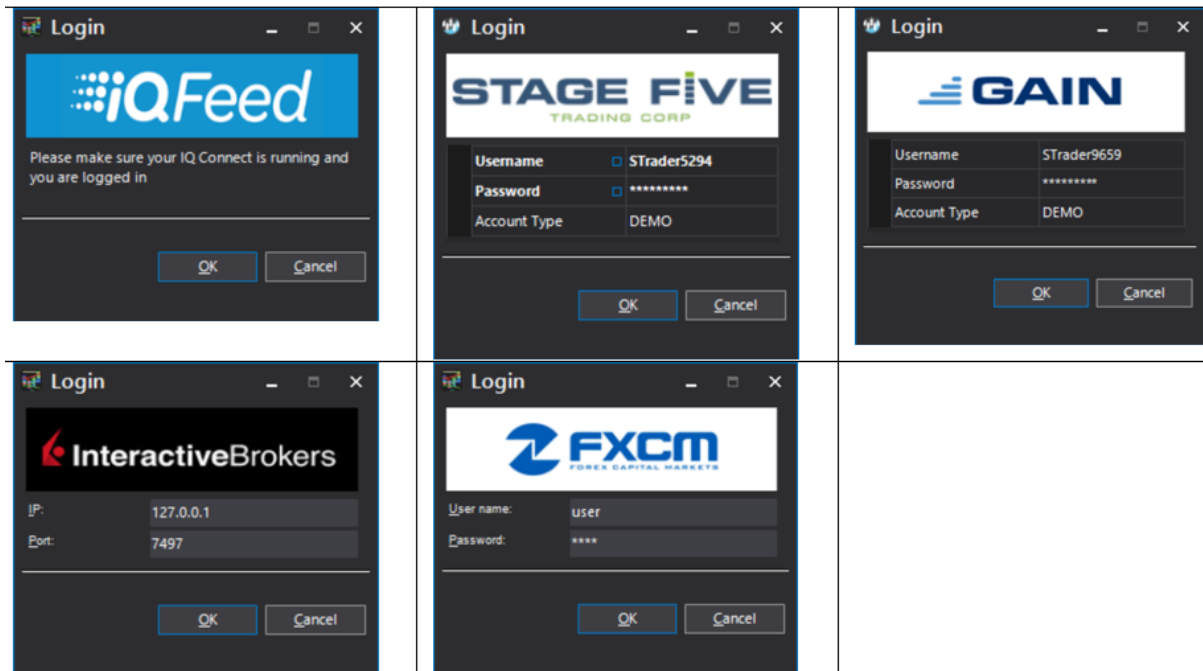


The login screen requires:

1. A selection of available workspaces. If no selection is made, the default workspace will be loaded;
2. A selection of whether to refresh or not the server-based symbol tree for the instrument panel. If a new symbols tree is available you will be made aware of it;
3. A list with the available data providers and a "Login" link to modify usernames and a passwords (assigned to you by the data provider upon signing up).

NOTES:

- A successfully established live data connection is marked as  ;
- Otherwise the connection will be marked as  ;
- The local data connector is automatically connected at login ;
- To modify the login credentials to an existing connection, please click the  button. It will bring up one of the following dialogs:



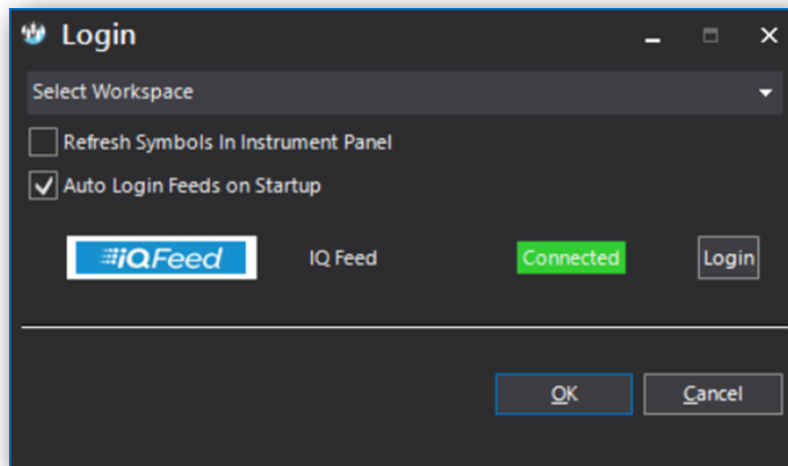
There are eight (8) available data sources you can choose from (listed in the table below). On top of that, the application has built-in local data capabilities and can work with fully customizable data templates and data files in ASCII, CSV and Metastock formats with tick, minute, hour, daily, weekly, monthly, quarterly and yearly data.

| | |
|----------------------------|---|
| IQFeed | www.iqfeed.net |
| BarChart | https://www.barchart.com/register/realtime/form.php?ID=EWP |
| E-Signal | www.esignal.com |
| Stage 5 Trading | https://stage5trading.com/ |
| Rithmic | http://yyy3.rithmic.com/ |
| Interactive Brokers | https://www.interactivebrokers.com/en/home.php |
| GAIN Capital | http://www.gaincapital.com/ |
| FXCM | www.fxcm.com (currencies only) |



Advanced License

The Advanced license entitles to the use of all S-Trader features with one single data feed choice and, if applicable, the compatible order routing API. The dialog would thus look similar though would only have one available data feed at a time.



Core License

The Core license entitles to the use of all S-Trader features with local and historical data feeds. The dialog would look as shown below.

